

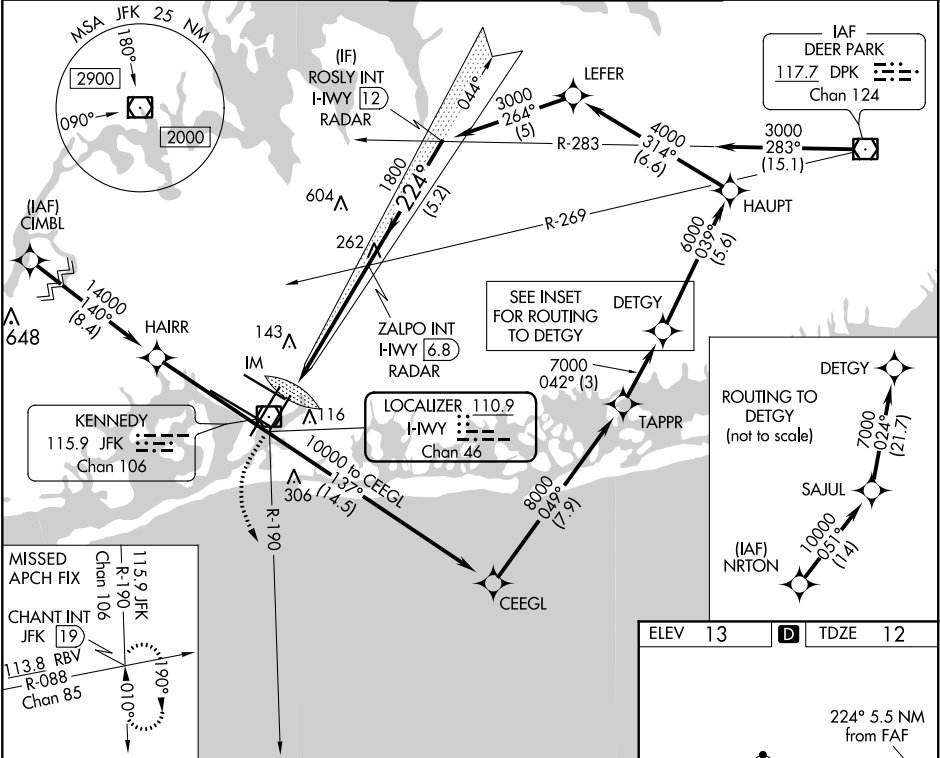
LOC/DME I-WY	APP CRS	Rwy Idg	8400
110.9	224°	TDZE	12
Chan 46		Apt Elev	13

ILS or LOC RWY 22L

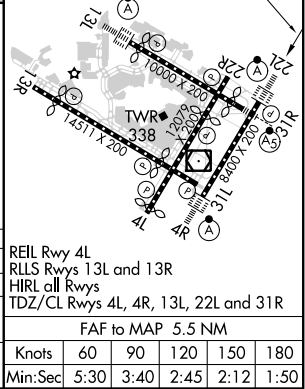
JOHN F KENNEDY INTL (JFK)

RNAV 1-GPS or RADAR required for procedure entry. From CIMBL, NRTON: RNAV 1-GPS required.	ALSIF-2 	MISSED APPROACH: Climb to 500 then climbing left turn to 3000 on JFK VOR/DME R-190 to CHANT INT/19 DME and hold.
Simultaneous approach authorized.		

D-ATIS (ARR/DEP) (ARR-NE) (ARR-SW)	NEW YORK APP CON	KENNEDY TOWER Rwys 4R/22L and 13L/31R	119.1 281.55	GND CON	CLNC DEL	CPDLC
128.725 117.7 115.4	128.125 269.0	Rwys 4L/22R and 13R/31L	123.9 281.55	121.9 348.6	135.05 348.6	



500	3000	CHANT INT	VGSI and ILS glidepath not coincident (VGSI Angle 3.00°/TCH 66°).	ROSLY INT I-WY 12 RADAR
* LOC only.	* I-WY			
0.2	1.2 NM	4.1 NM	5.2 NM	GS 3.00° TCH 53
CATEGORY	A	B	C	D
S-ILS 22L		212/18	200 (200-1/2)	
S-LOC 22L	520/24	508 (600-1/2)	520/55	508 (600-1)
CIRCLING	640-1	627 (700-1)	680-1 3/4 667 (700-1 3/4)	680-2 667 (700-2)



NE-2, 31 DEC 2020 to 28 JAN 2021

NE-2, 31 DEC 2020 to 28 JAN 2021