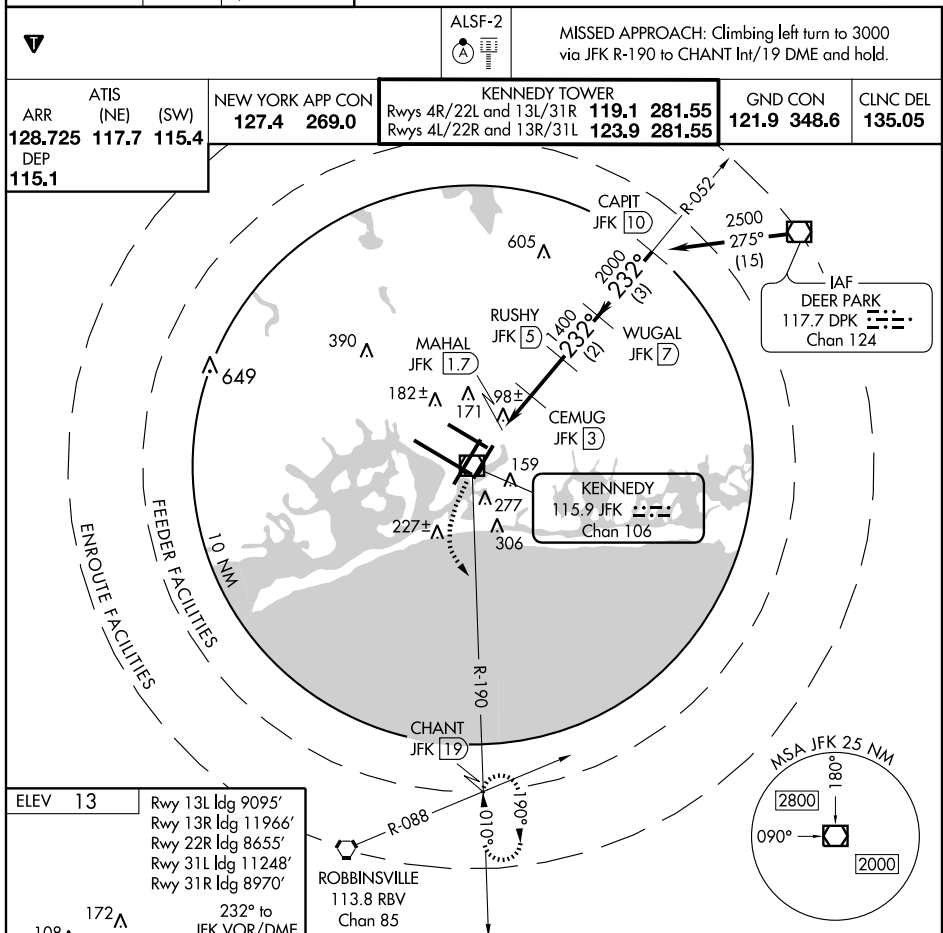


AL-610 (FAA)

VOR/DME JFK 115.9 Chan 106	APP CRS 232°	Rwy Idg 8400 TDZE 13 Apt Elev 13
--	------------------------	---

VOR/DME RWY 22L
NEW YORK / JOHN F. KENNEDY INTL (JFK)



REIL Rwy 4L
HIRL Rwy 4L-22R
4R-22L, 13R-31L, and 13L-31R
TDZ/CL Rwy 4R, 13L, 31R and 22L

Knots	60	90	120	150	180
Min:Sec					

3000
CHANT INT
JFK R-190 115.9
VOR/DME
MAHAL JFK 1.7
JFK 2.4
CEMUG JFK 3
RUSHY JFK 5
WUGAL JFK 7
CAPIT JFK 10
2500
232°
2000
1400
600
≤ 3.14°
TCH 69
0.6 0.7 0.6 2 NM 2 NM 3 NM
CATEGORY A B C D
S-22L 440/24 427 (500-½) 440/40 427 (500-¾) 440/50 427 (500-1)
CIRCLING 640-1 627 (700-1) 640-1¾ 627 (700-1¾) 640-2 627 (700-2)

NEW YORK, NEW YORK
Amdt 4D 06271

NEW YORK / JOHN F. KENNEDY INTL (JFK)
VOR/DME RWY 22L

NE-2. 21 DEC 2006 to 18 JAN 2007