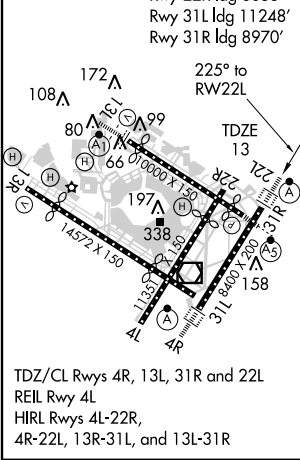
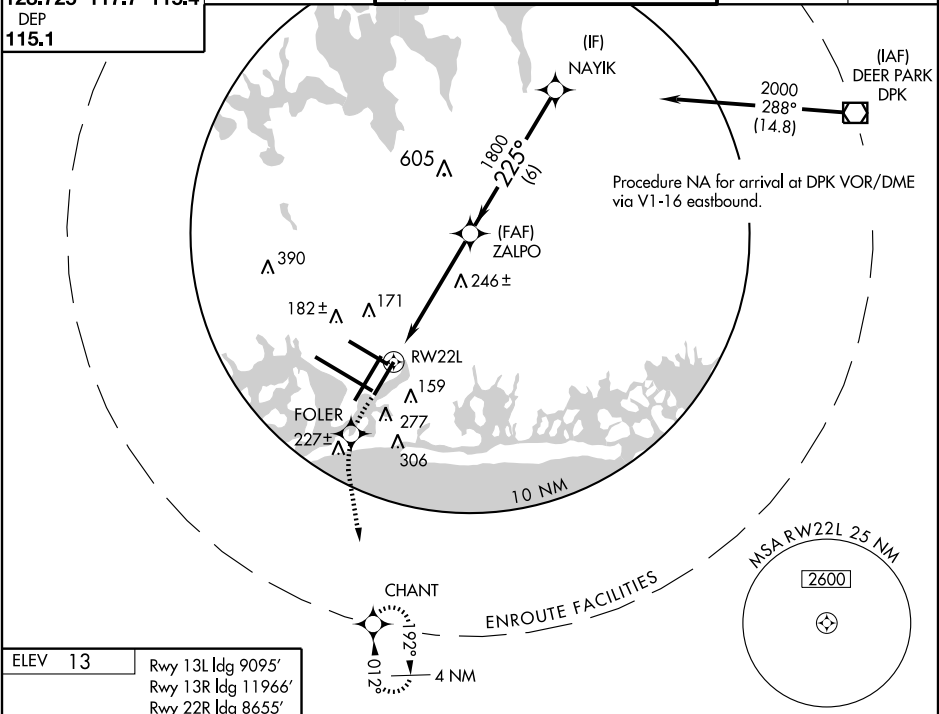





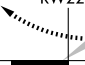

WAAS CH <b>97318</b> <b>W22A</b>	APP CRS <b>225°</b>	Rwy Idg <b>8400</b> TDZE <b>13</b> Apt Elev <b>13</b>
--	------------------------	---

**RNAV (GPS) RWY 22L**  
NEW YORK / JOHN F. KENNEDY INTL (JFK)

	<b>ALSF-2</b> 	<b>MISSED APPROACH:</b> Climb to 3000 direct FOLER and via 189° track to CHANT and hold.
---	--	--

ARR <b>128.725</b> DEP <b>115.1</b>	ATIS (NE) <b>117.7</b> (SW) <b>115.4</b>	NEW YORK APP CON <b>127.4 269.0</b>	KENNEDY TOWER Rwys 4R/22L and 13L/31R <b>119.1 281.55</b> Rwys 4L/22R and 13R/31L <b>123.9 281.55</b>	GND CON <b>121.9 348.6</b>	CLNC DEL <b>135.05</b>
--	---	--	---	-------------------------------	---------------------------



3000 ↑	FOLER 	 TRK 189°	CHANT 	NAYIK
 RW22L		ZALPO 		2000 Procedure Turn NA GS 3.00° TCH 53
*1.5 NM to RW22L		*LNAV only		225°
1.5		3.9 NM	6 NM	1800 VGSI and RNAV glidepath not coincident.
CATEGORY	A	B	C	D
LPV DA	270/24 257 (300-½)			
LNAV/ VNAV DA	420/50 407 (500-1)			
LNAV MDA	560/24	547 (600-½)	560/50 547 (600-1)	560/60 547 (600-1¼)
CIRCLING	640-1½	627 (700-1½)	640-1¾ 627 (700-1¾)	640-2 627 (700-2)

NE-2, 21 DEC 2006 to 18 JAN 2007

NE-2, 21 DEC 2006 to 18 JAN 2007