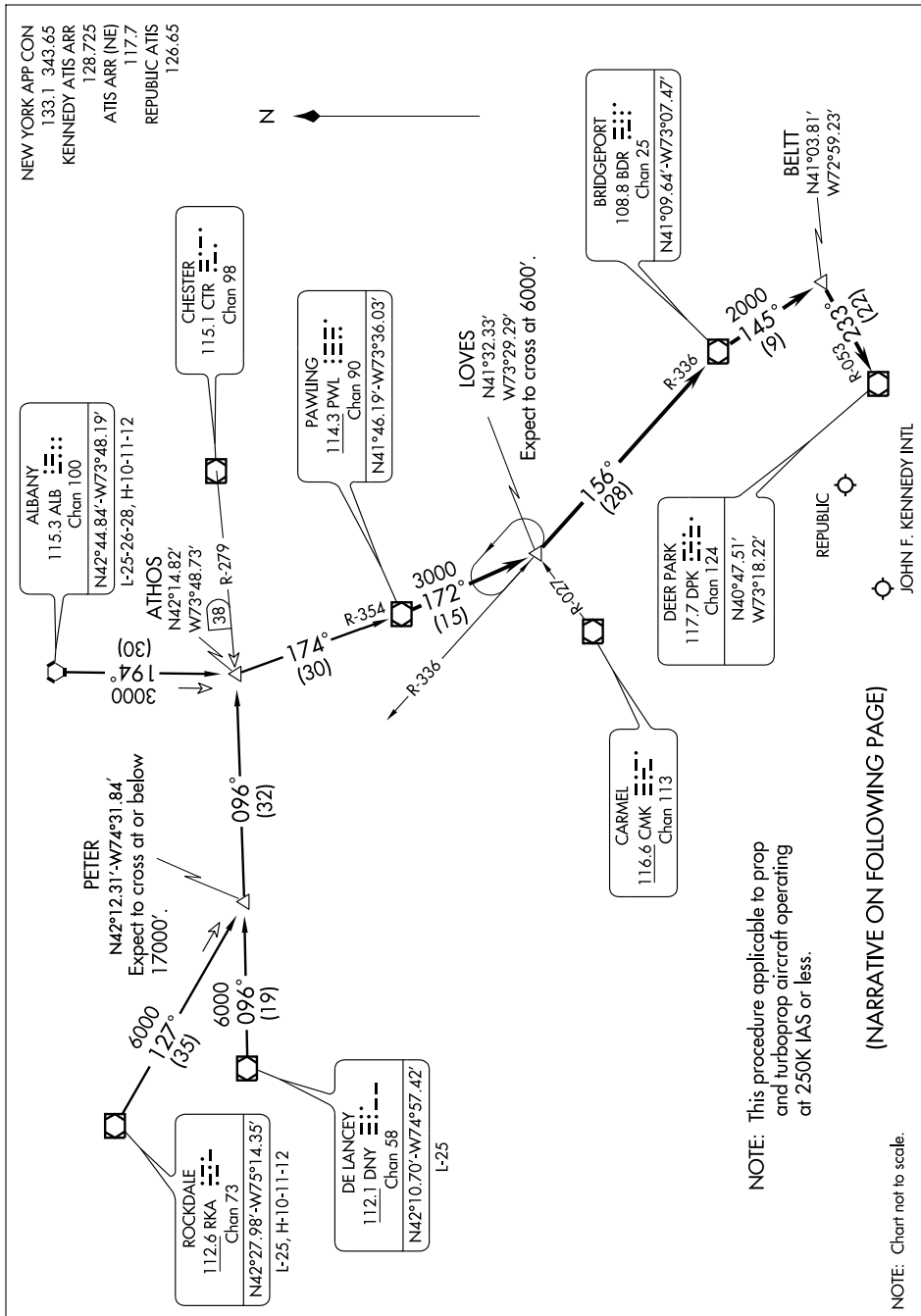
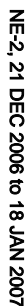


PAWLING TWO ARRIVAL

NEW YORK, NEW YORK



NOTE: This procedure applicable to prop and turboprop aircraft operating at 250K IAS or less.

(NARRATIVE ON FOLLOWING PAGE)

NOTE: Chart not to scale.

JOHN F. KENNEDY INTL

NE-2, 21 DEC 2006 to 18 JAN 2007

PAWLING TWO ARRIVAL

(PWL.PWL2) 06047

NEW YORK, NEW YORK