

AL-610 (FAA)

WAAS CH <b>97318</b> <b>W22A</b>	APP CRS <b>225°</b>	Rwy Idg TDZE Apt Elev	<b>8400</b> <b>13</b> <b>13</b>
----------------------------------------	------------------------	-----------------------------	---------------------------------------

## RNAV (GPS) RWY 22L

NEW YORK / JOHN F. KENNEDY INTL (JFK)

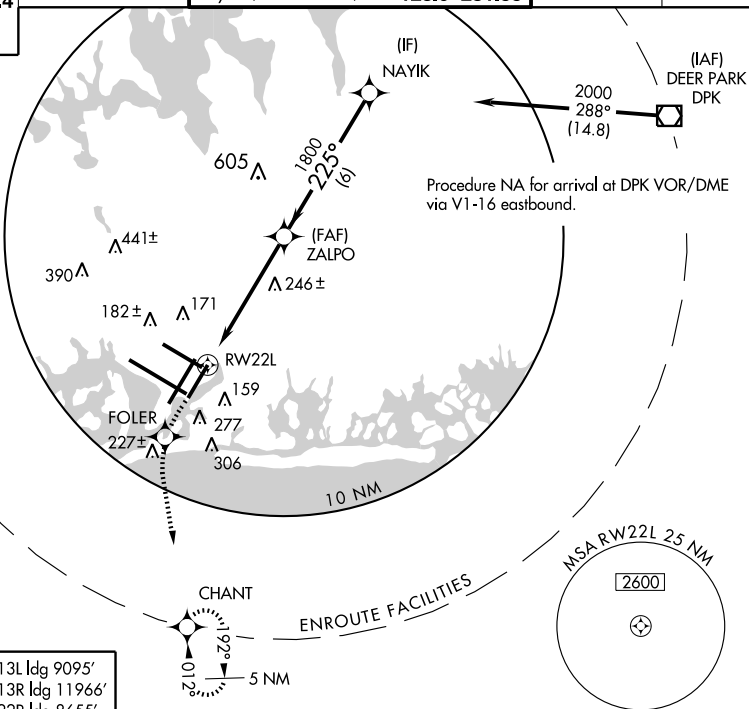


DME/DME RNP -0.3 NA. Baro-VNAV NA  
below -15°C (5°F). For inoperative ALSF-2,  
increase LPV all CAT's visibility to RVR 4000.

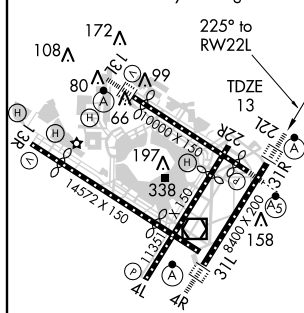


**MISSED APPROACH:** Climb to 3000 direct FOLER and via 189° track to CHANT and hold.



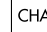
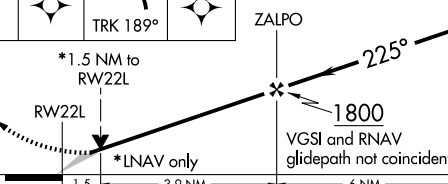
ARR	ATIS (NE)	(SW)	NEW YORK APP CON		KENNEDY TOWER		GND CON	CLNC DEL
128.725	117.7	115.4	127.4	269.0	Rwys 4R/22L and 13L/31R	119.1 281.55	121.9 348.6	135.05
DEP					Rwys 4L/22R and 13R/31L	123.9 281.55		
115.1								



ELEV 13	Rwy 13L Idg 9095'
	Rwy 13R Idg 11966'
	Rwy 22R Idg 8655'
	Rwy 31L Idg 11248'
	Rwy 31R Idg 8970'



TDZ/CL Rwy's 4R, 13L, 31R and 22L  
REIL Rwy 4L  
HIRL Rwy's 4L-22R,  
4R-22L, 13R-31L, and 13L-31R

3000 ↑	FOLER 	TRK 189° 	CHANT 	NAYIK 2000
				
CATEGORY	A	B	C	D
LPV DA	270/24 257 (300-½)			
RNAV/DA	420/50 407 (500-1)			
RNAV MDA	560/24	547 (600-½)	560/50 547 (600-1)	560/60 547 (600-1¼)
CIRCLING	640-1½ 627 (700-1½)		640-1¾ 627 (700-1¾)	640-2 627 (700-2)

NEW YORK, NEW YORK

Amdt 1 07354

NEW YORK / JOHN F. KENNEDY INTL (JFK)

40°38'N - 73°47'W

## RNAV (GPS) RWY 22L

NE-2, 20 DEC 2007 to 17 JAN 2008

NE-2. 20 DEC 2007 to 17 JAN 2008