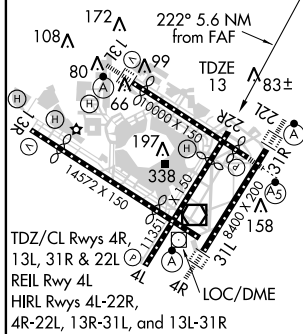
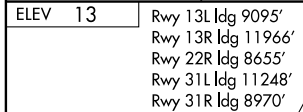


ILS RWY 22R
NEW YORK / JOHN F. KENNEDY INTL (JFK)

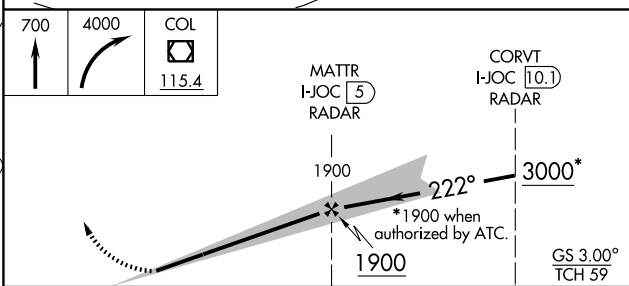
MISSED APPROACH: Climb to 700 then climbing right turn to 4000 direct COL VOR/DME and hold.

DEP
115.1

RADAR REQUIRED



FAF to MAP 5.6 NM					
Knots	60	90	120	150	180
Min:Sec	5:36	3:44	2:48	2:14	1:52



CATEGORY	A	B	C	D
S-ILS 22R	263/40 250 (300-3)			
S-LOC 22R	460/50 447 (500-1)	460/60 447 (500-1½)	460-1½ 447 (500-1½)	
CIRCLING	640-1 627 (700-1)	640-1½ 627 (700-1½)	640-2 627 (700-2)	