

NEW YORK, NEW YORK

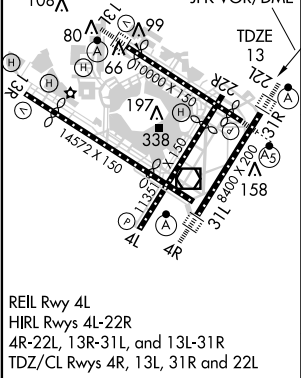
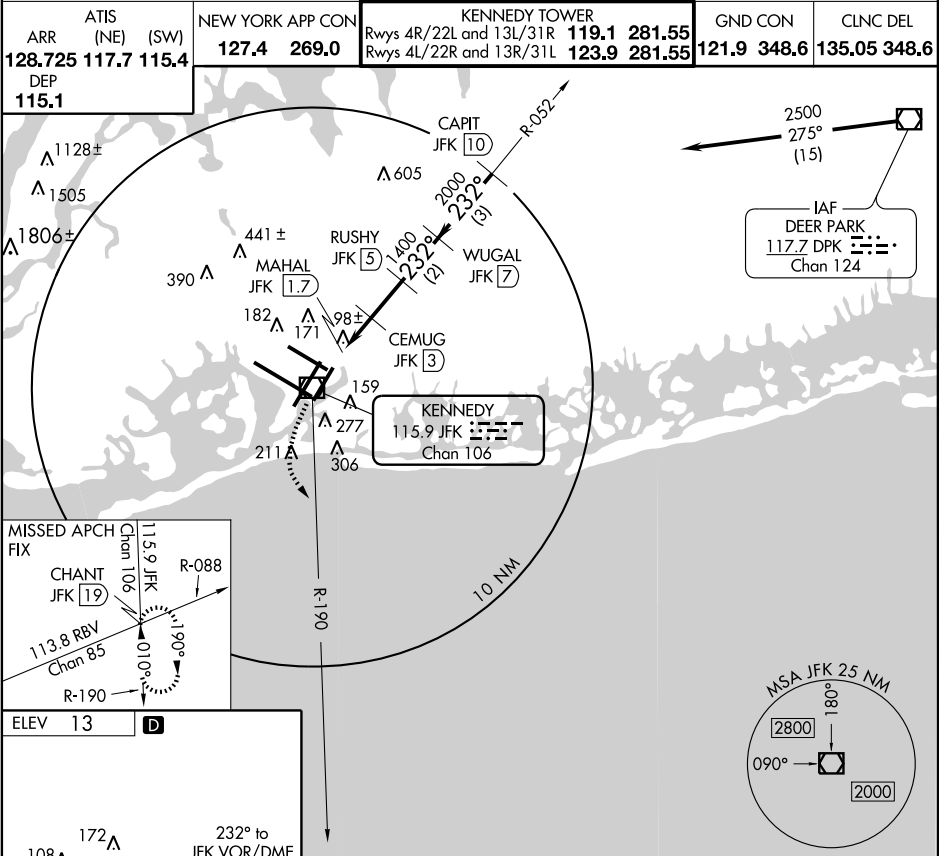
AL-610 (FAA)

VOR/DME JFK	APP CRS	Rwy Idg	8400
115.9	232°	TDZE	13
Chan 106		Apt Elev	13

VOR/DME RWY 22L

NEW YORK / JOHN F. KENNEDY INTL (JFK)

ATIS (NE) (SW) ARR 128.725 117.7 115.4 DEP 115.1	NEW YORK APP CON 127.4 269.0	KENNEDY TOWER Rwys 4R/22L and 13L/31R 119.1 281.55 Rwys 4L/22R and 13R/31L 123.9 281.55	ALS-2 	MISSED APPROACH: Climbing left turn to 3000 via JFK R-190 to CHANT Int/19 DME and hold.	GND CON 121.9 348.6	CLNC DEL 135.05 348.6
--	---------------------------------	---	-----------	--	------------------------	--------------------------



	CHANT INT	CEMUG JFK [3]	RUSHY JFK [5]	WUGAL JFK [7]	CAPIT JFK [10]
	JFK R-190 115.9	JFK [2.4]	JFK [5]	JFK [7]	JFK [10]
	VOR/DME MAHAL JFK [1.7]	JFK [2.4]	JFK [5]	JFK [7]	JFK [10]
	600	1400	2000	2500	2500
	0.6	0.7	0.6	2 NM	3 NM
CATEGORY	A	B	C	D	
S-22L	440/24	427 (500-½)	440/40 427 (500-¾)	440/50 427 (500-1)	
CIRCLING	640-1	627 (700-1)	640-1¾ 627 (700-1¾)	640-2 627 (700-2)	

NEW YORK, NEW YORK
Amdt 4D 09351

VOR/DME RWY 22L

NEW YORK / JOHN F. KENNEDY INTL (JFK)

40°38'N - 73°47'W

NE-2, 17 DEC 2009 to 14 JAN 2010

NE-2, 17 DEC 2009 to 14 JAN 2010