


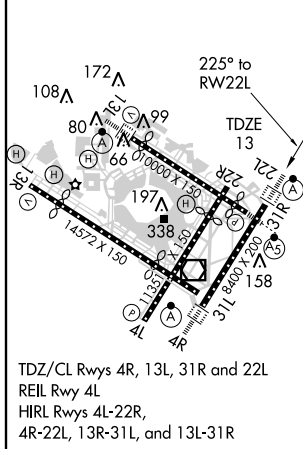
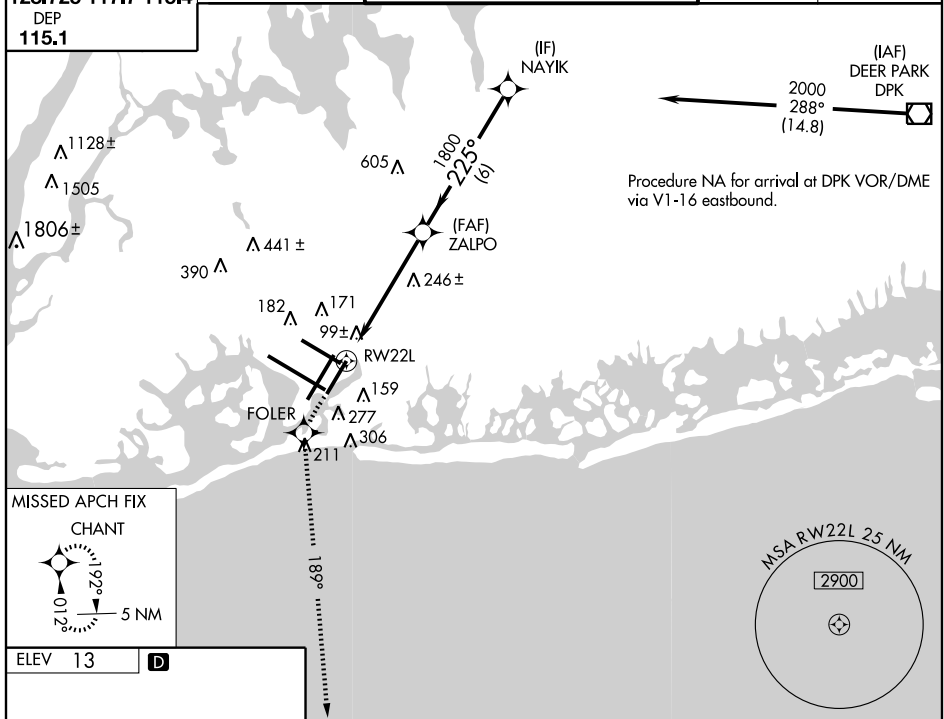
AL-610 (FAA)

WAAS CH <b>97318</b> <b>W22A</b>	APP CRS <b>225°</b>	Rwy Idg <b>8400</b> TDZE <b>13</b> Apt Elev <b>13</b>
--	------------------------	---

RNAV (GPS) Y RWY 22L  
NEW YORK / JOHN F. KENNEDY INTL (JFK)

<p><b>▼</b> For uncompensated Baro-VNAV systems, LNAV/VNAV NA below -13°C (8°F) or above 49°C (120°F). DME/DME RNP-0.3 NA.</p>	<p>ALSf-2</p> 	<p>MISSED APPROACH: Climb to 3000 direct FOLR and via 189° track to CHANT and hold.</p>
--	---	---

ARR		ATIS		NEW YORK APP CON		KENNEDY TOWER		GND CON		CLNC DEL	
(NE)		(SW)				Rwys 4R/22L and 13L/31R					
128.725		117.7		127.4 269.0		119.1 281.55		121.9 348.6		135.05 348.6	
						Rwys 4L/22R and 13R/31L					
						123.9 281.55					



3000 ↑	FOLER ✦	189° trk	CHANT ✦	VGSI and RNAV glidepath not coincident.	NAYIK
				2000	Procedure Turn NA GS 3.00° TCH 53
CATEGORY	A		B		C
LPV DA	270/24 257 (300-½)				
LNNAV/ VNAV DA	420/50 407 (500-1)				
LNNAV MDA	560/24 547 (600-½)		560/50 547 (600-1)		560/60 547 (600-1¼)
CIRCLING	640-1 627 (700-1)		640-1¼ 627 (700-1¼)		640-2 627 (700-2)

NEW YORK, NEW YORK  
Amdt 1B 09351

NEW YORK / JOHN F. KENNEDY INTL (JFK)  
RNAV (GPS) Y RWY 22L

NE-2, 17 DEC 2009 to 14 JAN 2010