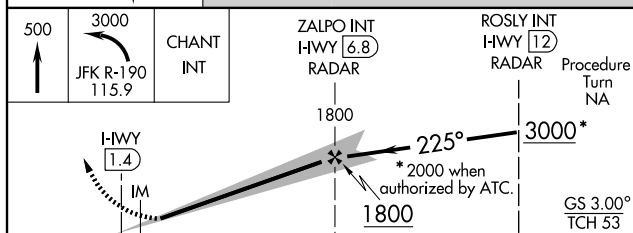
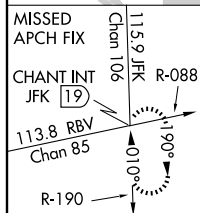
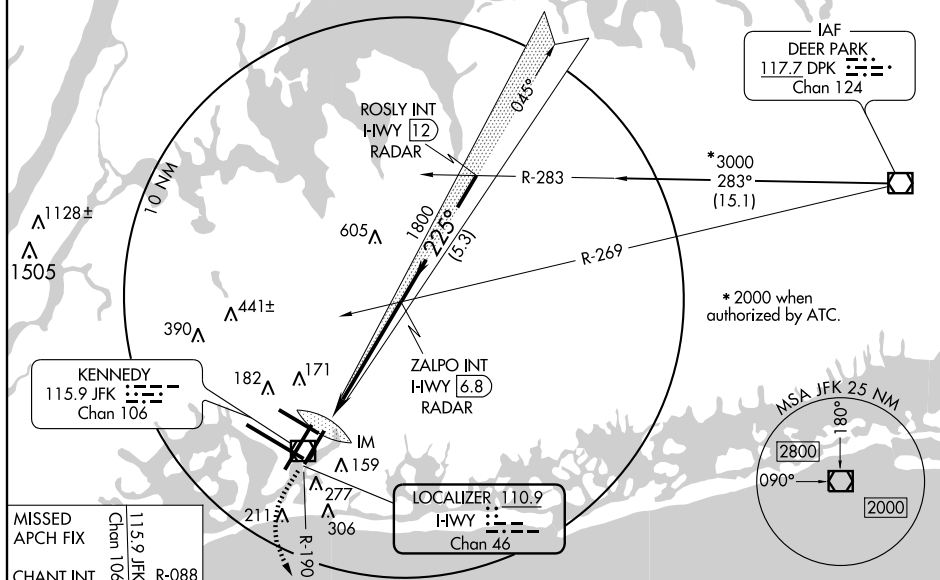


ILS or LOC RWY 22L
NEW YORK / JOHN F. KENNEDY INTL (JFK)

MISSED APPROACH: Climb to 500 then climbing left turn to 3000 via JFK R-190 to CHANT Int/19 DME and hold.

	ARR	ATIS (NE)	(SW)	NEW YORK APP CON	KENNEDY TOWER	GND CON	CLNC DEL
128.725	117.7	115.4		127.4 269.0	Rwys 4R/22L and 13L/31R 119.1 281.55 Rwys 4L/22R and 13R/31L 123.9 281.55	121.9 348.6	135.05 348.6
DEP 115.1							

[illegible]

40°38'N - 73°47'W