

AL-610 (FAA)

LOC/DME I-JOC 109.5 Chn 32	APP CRS 222°	Rwy Idg 8655 TDZE 13 Apt Elev 13
--	------------------------	---

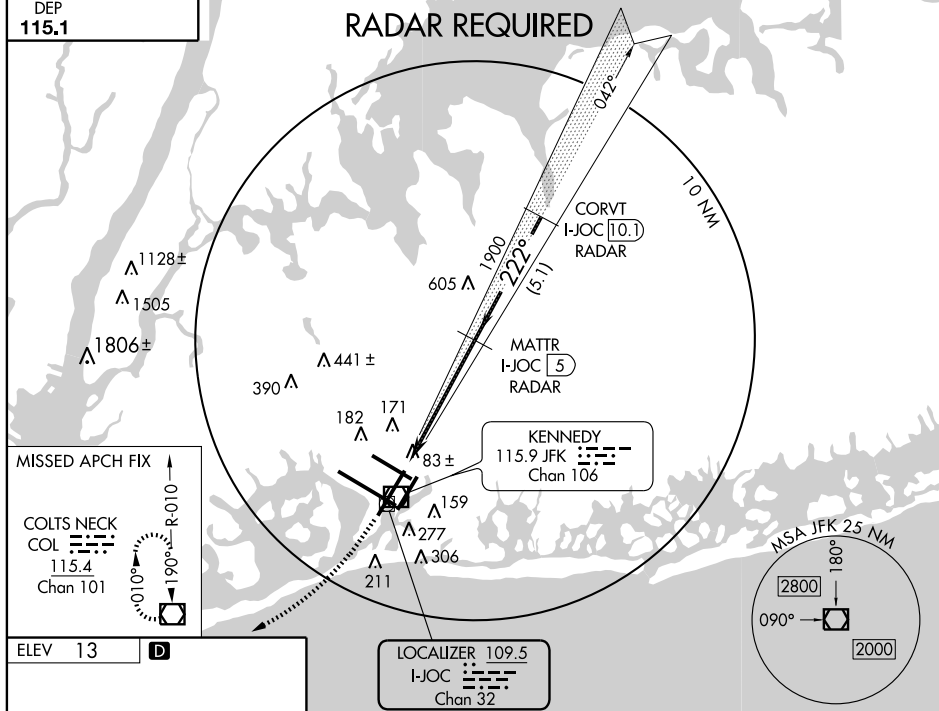
ILS RWY 22R

NEW YORK / JOHN F. KENNEDY INTL (JFK)

MISSED APPROACH: Climb to 700 then climbing right turn to 4000 direct COL VOR/DME and hold.

ARR	ATIS (NE)	(SW)	NEW YORK APP CON		KENNEDY TOWER Rwys 4R/22L and 13L/31R		GND CON	CLNC DEL
128.725	117.7	115.4	127.4	269.0	119.1	281.55	121.9	348.6
DEP					Rwys 4L/22R and 13R/31L	123.9	281.55	135.05
115.1								

RADAR REQUIRED



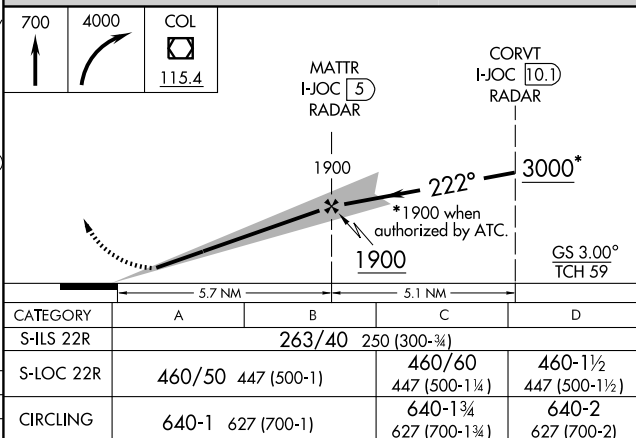
ELEV 13

D

Diagram illustrating the FAF to MAP 5.7 NM segment of the flight path. The diagram shows a series of waypoints (108, 172, 131, 99, 80, 66, 167, 338, 222, 221, 158, 311, 4R) and their associated altitudes. It also shows the TDZE (13), TDZ/CL Rwy 4R, REIL Rwy 4L, and HIRL Rwy 4L-22R, 4R-22L, 13R-31L, and 13L-31R. The diagram includes a scale bar for 5.7 NM and a table of knots and minutes/seconds for the segment.

FAF to MAP 5.7 NM

Knots	60	90	120	150	180
Min:Sec	5:42	3:48	2:51	2:17	1:54



NEW YORK, NEW YORK

Amdt 2 09351

NEW YORK / JOHN F. KENNEDY INTL (JFK)

40°38'N - 73°47'W

ILS RWY 22R

NE-2, 17 DEC 2009 to 14 JAN 2010

NE-2, 17 DEC 2009 to 14 JAN 2010