

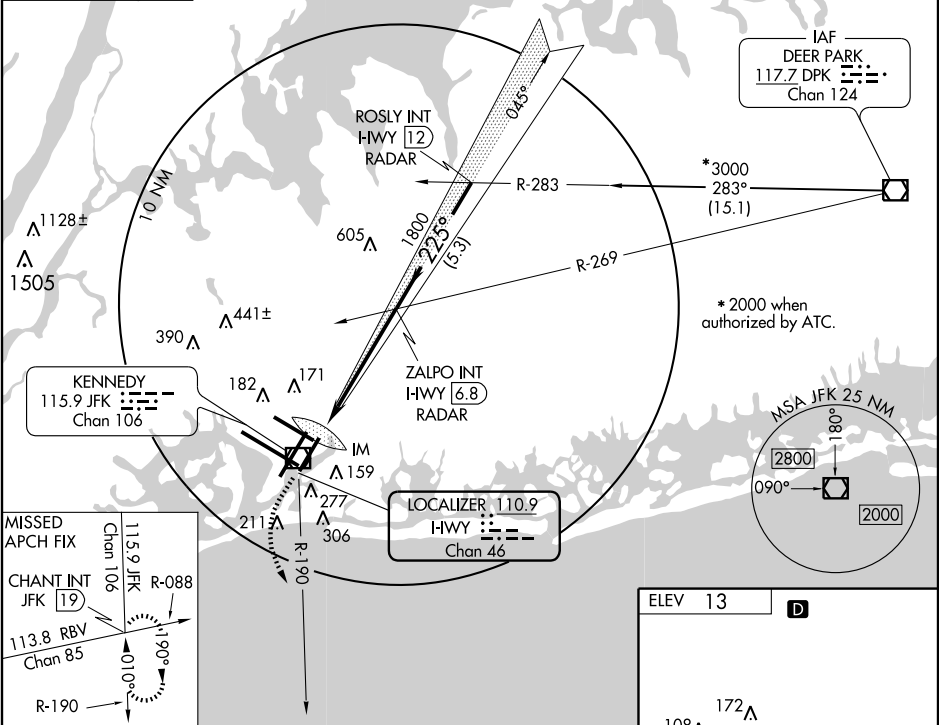
LOC/DME I-HWY	APP CRS	Rwy Idg	8400
<b>110.9</b>	<b>225°</b>	TDZE	13
Chan <b>46</b>		Apt Elev	13

**ILS RWY 22L (CAT III)**  
NEW YORK/JOHN F. KENNEDY INTL (JFK)

**ALSF-2**

MISSED APPROACH: Climb to 500 then climbing left turn to 3000 via JFK R-190 to CHANT Int/19 DME and hold.

ATIS	NEW YORK APP CON	KENNEDY TOWER	GND CON	CLNC DEL
ARR (NE) (SW)		Rwys 4R/22L and 13L/31R		
<b>128.725 117.7 115.4</b>	<b>127.4 269.0</b>	<b>119.1 281.55</b>	<b>121.9 348.6</b>	<b>135.05 348.6</b>
DEP		Rwys 4L/22R and 13R/31L		
<b>115.1</b>		<b>123.9 281.55</b>		



**MISSED APCH FIX**

CHANT INT JFK (19)

113.8 RBV Chan 85

R-190

110.9 JFK Chan 106

115.9 JFK Chan 106

R-088

1190°

10100'

**ILS DATA**

500	3000	CHANT INT	ZALPO INT I-HWY 6.8 RADAR	ROSLY INT I-HWY 12 RADAR	Procedure Turn NA
JFK R-190 115.9					

13 MSL

IM 117

1800

225°

3000\*

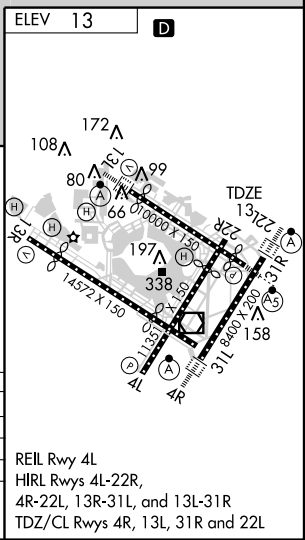
\* 2000 when authorized by ATC.

GS 3.00° TCH 53

959' 975' 5.2 NM 5.3 NM

CATEGORY	A	B	C	D
S-ILS 22L		CAT IIIa	RVR 07	
S-ILS 22L		CAT IIIb	RVR 06	
S-ILS 22L		CAT IIIc	NA	

**CATEGORY III ILS - SPECIAL AIRCREW & AIRCRAFT CERTIFICATION REQUIRED**



NE-2, 17 DEC 2009 to 14 JAN 2010

NE-2, 17 DEC 2009 to 14 JAN 2010