

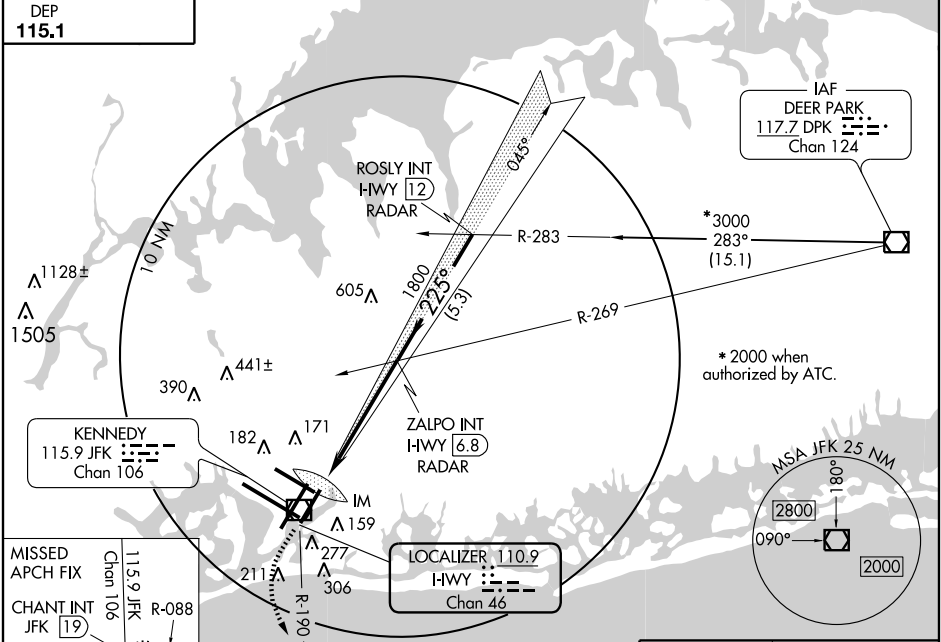
LOC/DME I-HWY	APP CRS	Rwy Idg	8400
110.9	225°	TDZE	13
Chan 46		Apt Elev	13

ILS RWY 22L (CAT II)
NEW YORK / JOHN F. KENNEDY INTL (JFK)

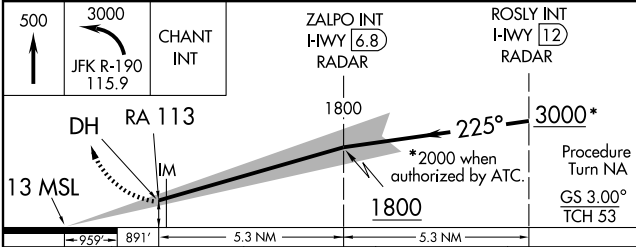
ALSIF-2

MISSED APPROACH: Climb to 500 then climbing left turn to 3000 via JFK R-190 to CHANT Int/19 DME and hold.

ATIS ARR (NE) (SW) 128.725 117.7 115.4 DEP 115.1	NEW YORK APP CON 127.4 269.0	KENNEDY TOWER Rwys 4R/22L and 13L/31R 119.1 281.55 Rwys 4L/22R and 13R/31L 123.9 281.55	GND CON 121.9 348.6	CLNC DEL 135.05 348.6
--	--	---	-------------------------------	---------------------------------

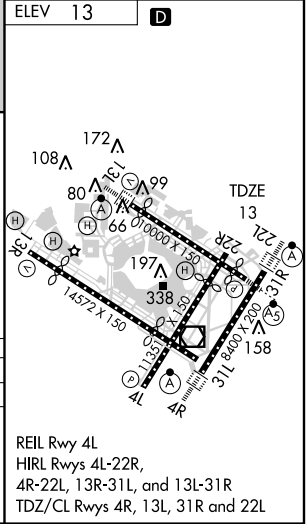


MISSED APCH FIX
Chan 106
115.9 JFK
R-088
113.8 RBV
Chan 85
R-190



CATEGORY	A	B	C	D
S-ILS 22L	RA 113/12	100	DA 113	

**CATEGORY II ILS - SPECIAL AIRCREW
& AIRCRAFT CERTIFICATION REQUIRED**



NE-2, 17 DEC 2009 to 14 JAN 2010

NE-2, 17 DEC 2009 to 14 JAN 2010