

NEW YORK, NEW YORK

AL-610 (FAA)

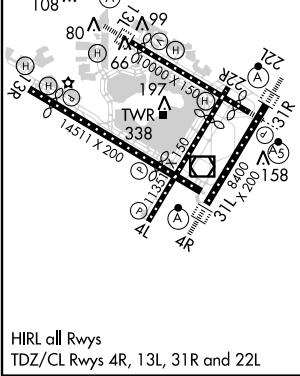
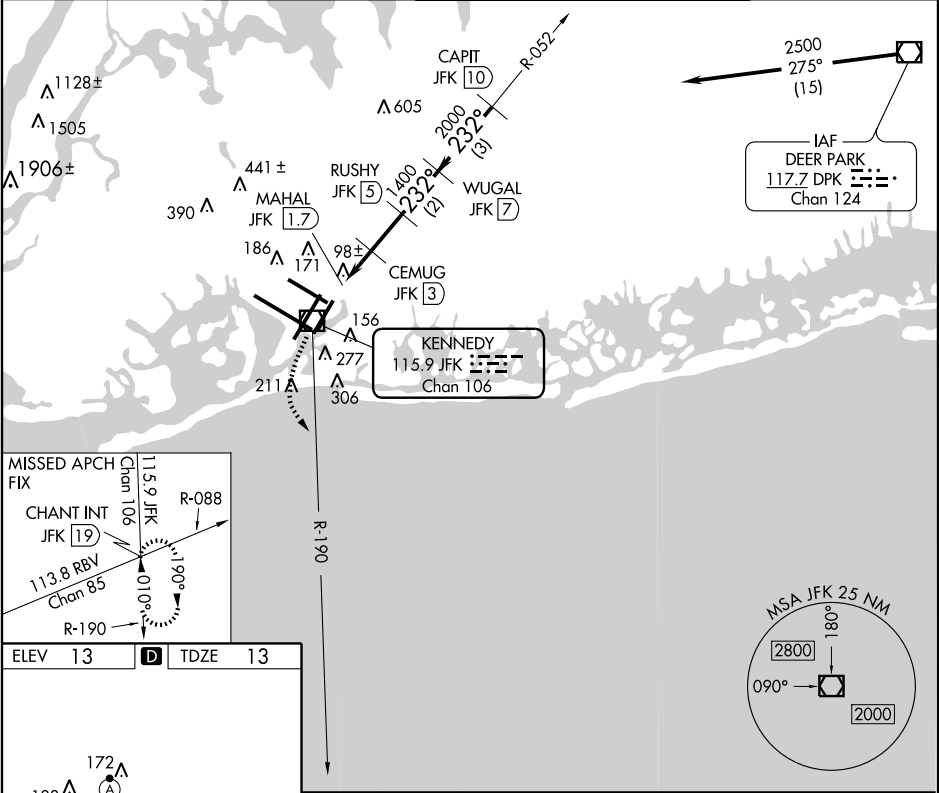
VOR/DME JFK	APP CRS	Rwy Idg	8400
115.9	232°	TDZE	13
Chan 106		Apt Elev	13

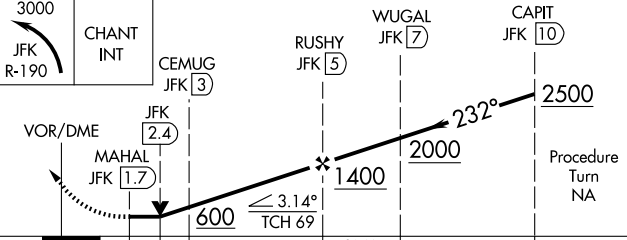
# VOR/DME RWY 22L

NEW YORK / JOHN F. KENNEDY INTL (JFK)

	ALSIF-2	MISSED APPROACH: Climbing left turn to 3000 via JFK R-190 to CHANT INT/19 DME and hold.
--	---------	---

ATIS (ARR-NE)	NEW YORK APP CON	KENNEDY TOWER	GND CON	CLNC DEL
128.725	127.4	Rwys 4R/22L and 13L/31R 119.1 281.55	121.9	135.05
117.7	269.0	Rwys 4L/22R and 13R/31L 123.9 281.55	348.6	348.6
115.4				



				
CATEGORY	A	B	C	D
S-22L	440/24	427 (500-½)	440/40 427 (500-¾)	440/50 427 (500-1)
CIRCLING	640-1	627 (700-1)	640-1¾ 627 (700-1¾)	640-2 627 (700-2)

NEW YORK, NEW YORK  
Amdt 4D 11349

NEW YORK / JOHN F. KENNEDY INTL (JFK)

40°38'N-73°47'W

# VOR/DME RWY 22L

NE-2, 15 DEC 2011 to 12 JAN 2012

NE-2, 15 DEC 2011 to 12 JAN 2012