

NEW YORK, NEW YORK

AL-610 (FAA)

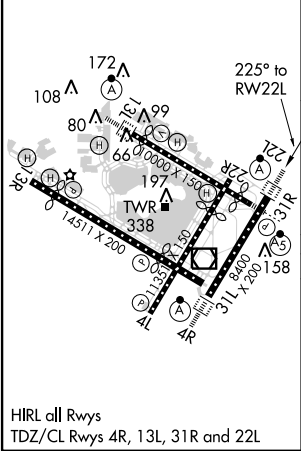
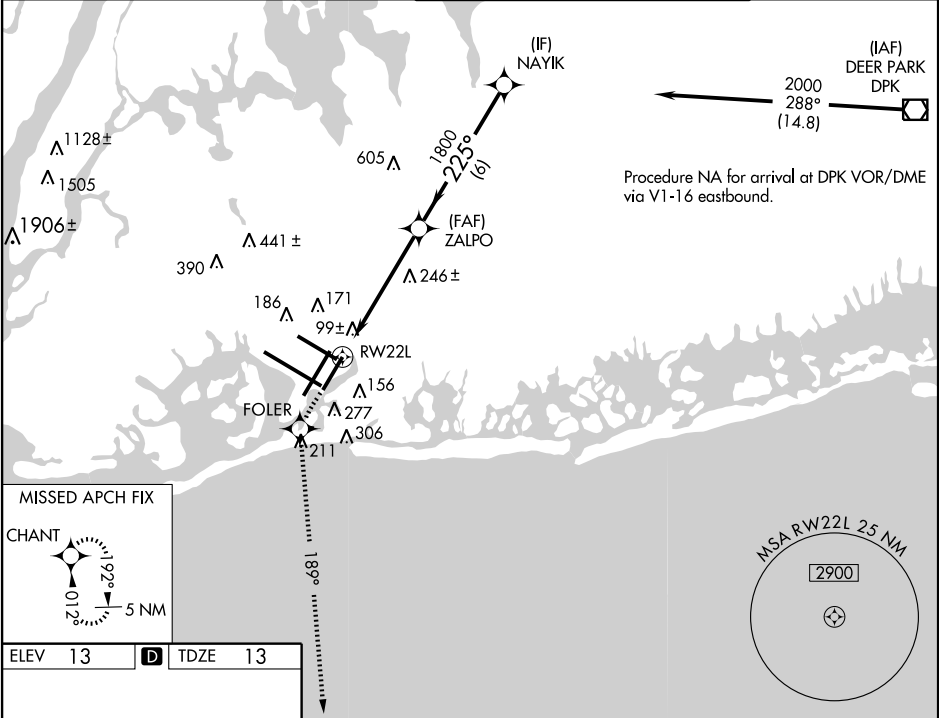
WAAS CH 97318 W22A	APP CRS 225°	Rwy Idg TDZE 13 Apt Elev 13
--	------------------------	---

RNAV (GPS) Y RWY 22L

NEW YORK / JOHN F. KENNEDY INTL (JFK)

▼ For uncompensated Baro-VNAV systems, LNAV/VNAV NA below -13°C (8°F) or above 49°C (120°F). DME/DME RNP-0.3 NA.	ALSF-2 	MISSED APPROACH: Climb to 3000 direct FOLER and via 189° track to CHANT and hold.
--	------------	---

ATIS (ARR-NE) (ARR-SW) 128.725 117.7 115.4	NEW YORK APP CON 127.4 269.0	KENNEDY TOWER Rwys 4R/22L and 13L/31R 119.1 281.55 Rwys 4L/22R and 13R/31L 123.9 281.55	GND CON 121.9 135.05 348.6	CLNC DEL 135.05 348.6
---	--	---	--	---



3000	FOLER	tr 189°	CHANT	VGSI and RNAV glidepath not coincident (VGSI Angle 3.00/TCH 66).
*LNAV only				
*1.5 NM to RWY 22L				
ZALPO				
NAYIK				
2000				
Procedure Turn NA				
GS 3.00°				
TCH 53				
CATEGORY	A	B	C	D
LPV DA	270/24 257 (300-½)			
LNAV/VNAV DA	420/50 407 (500-1)			
LNAV MDA	560/24 547 (600-½)	560/50 547 (600-1)	560/60 547 (600-1¼)	
CIRCLING	640-1 627 (700-1)	640-1¾ 627 (700-1¾)	640-2 627 (700-2)	

NEW YORK, NEW YORK
Amdt 1B 11349

NEW YORK / JOHN F. KENNEDY INTL (JFK)
40°38'N-73°47'W
RNAV (GPS) Y RWY 22L

NE-2, 15 DEC 2011 to 12 JAN 2012

NE-2, 15 DEC 2011 to 12 JAN 2012