

NEW YORK, NEW YORK

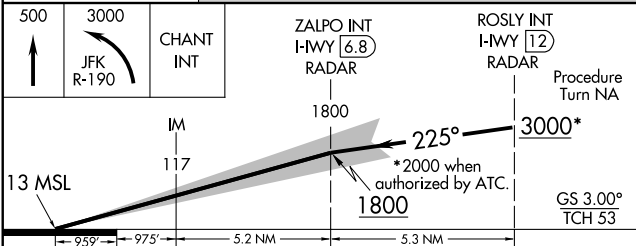
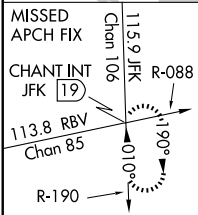
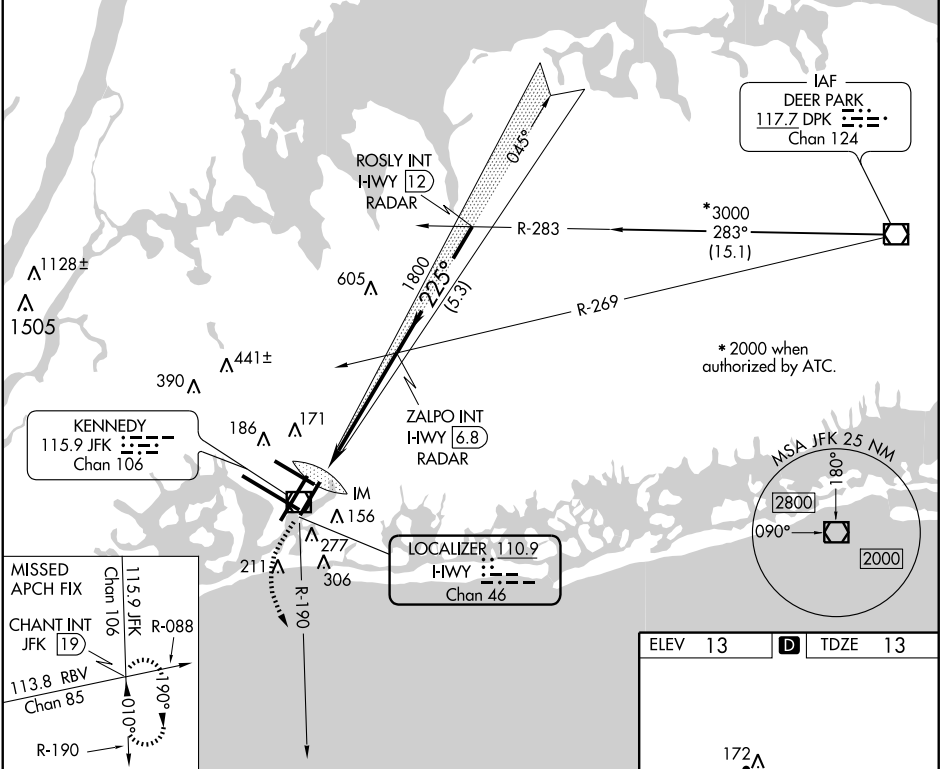
AL-610 (FAA)

LOC/DME I-HWY	APP CRS	Rwy Idg	8400
110.9	225°	TDZE	13
Chan 46		Apt Elev	13

ILS RWY 22L (CAT III)
NEW YORK/JOHN F. KENNEDY INTL (JFK)

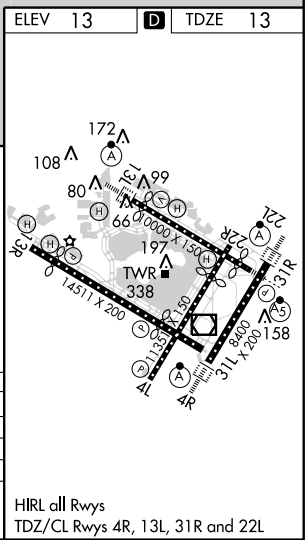
V A	ALSIF-2 	MISSED APPROACH: Climb to 500 then climbing left turn to 3000 via JFK R-190 to CHANT INT/19 DME and hold.
----------------------	-------------	---

ATIS (ARR-NE)	(ARR-SW)	NEW YORK APP CON	KENNEDY TOWER Rwys 4R/22L and 13L/31R	119.1 281.55	GND CON	CLNC DEL
128.725	117.7	115.4	127.4	269.0	121.9 135.05	135.05
			Rwys 4L/22R and 13R/31L	123.9 281.55	348.6	348.6



CATEGORY	A	B	C	D
S-ILS 22L		CAT IIIa	RVR 07	
S-ILS 22L		CAT IIIb	RVR 06	
S-ILS 22L		CAT IIIc	NA	

CATEGORY III ILS - SPECIAL AIRCREW & AIRCRAFT CERTIFICATION REQUIRED



NEW YORK, NEW YORK

NEW YORK / JOHN F. KENNEDY INTL (JFK)

Amdt 24A 11349

40°38'N-73°47'W

ILS RWY 22L (CAT III)

NE-2, 15 DEC 2011 to 12 JAN 2012

NE-2, 15 DEC 2011 to 12 JAN 2012