

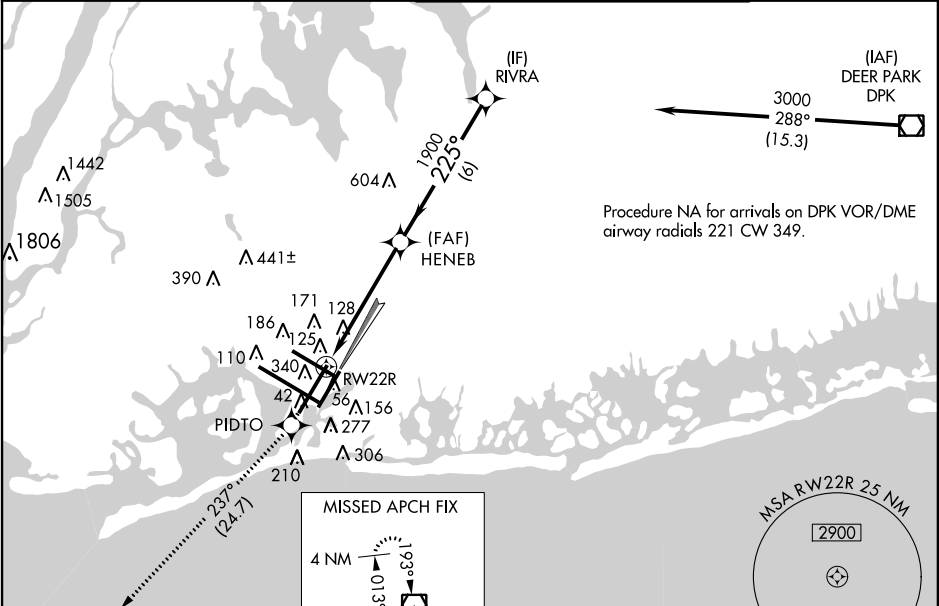
WAAS CH <b>40019</b> <b>W22B</b>	APP CRS <b>225°</b>	Rwy Idg TDZE <b>12</b> Apt Elev <b>13</b>	<b>7795</b>
--	------------------------	---	-------------

RNAV (GPS) RWY 22R  
JOHN F KENNEDY INTL (JFK)

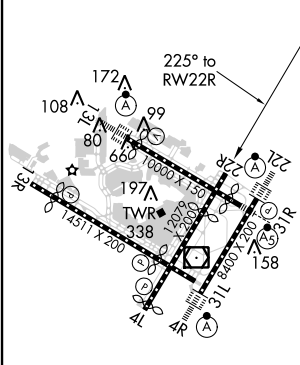
▼ For uncompensated Baro-VNAV systems, LNAV/VNAV NA below -12°C (11°F) or above 54°C (130°F). DME/DME RNP-0.3 NA. Simultaneous approach authorized with ILS or LOC Rwy 22L, ILS Rwy 22L (CAT II), ILS Rwy 22L (CAT III), RNAV (GPS) Y Rwy 22L. LNAV procedure NA during simultaneous operations. Use of FD or AP providing RNAV track guidance required during simultaneous operations.

MISSED APPROACH: Climb to 4000 direct PIDTO and on track 237° to COL VOR/DME and hold.




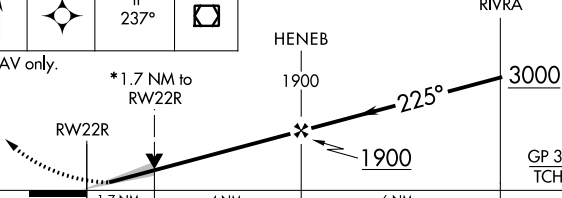

ATIS (ARR-NE) (ARR-SW) <b>128.725 117.7 115.4</b>	NEW YORK APP CON <b>128.12 269.0</b>	KENNEDY TOWER Rwys 4R/22L and 13L/31R <b>119.1 281.55</b> Rwys 4L/22R and 13R/31L <b>123.9 281.55</b>	GND CON <b>121.9 135.05</b> <b>348.6</b>	CLNC DEL <b>135.05</b> <b>348.6</b>
---	---	---	--	---



ELEV 13	<b>D</b>	TDZE 12
---------	----------	---------



REIL Rwy 4L  
RLS Rwy 13R  
HIRL all Rwys  
TDZ/CL Rwys 4R, 13L, 31R and 22L

4000	PIDTO	COL		
		tr 237°		
*LNAV only.				
				
CATEGORY	A	B	C	D
LPV DA	269/40 257 (300-¾)			
LNAV/VNAV DA	501-1½ 489 (500-1½)			
LNAV MDA	600/50	588 (600-1)	600-1¾ 588 (600-1¾)	
 CIRCLING	640-1	627 (700-1)	640-1¾ 627 (700-1¾)	660-2 647 (700-2)

NE-2, 10 DEC 2015 to 07 JAN 2016

NE-2, 10 DEC 2015 to 07 JAN 2016