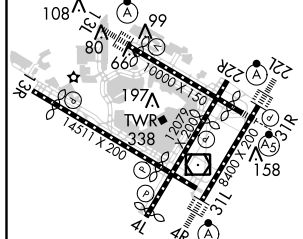
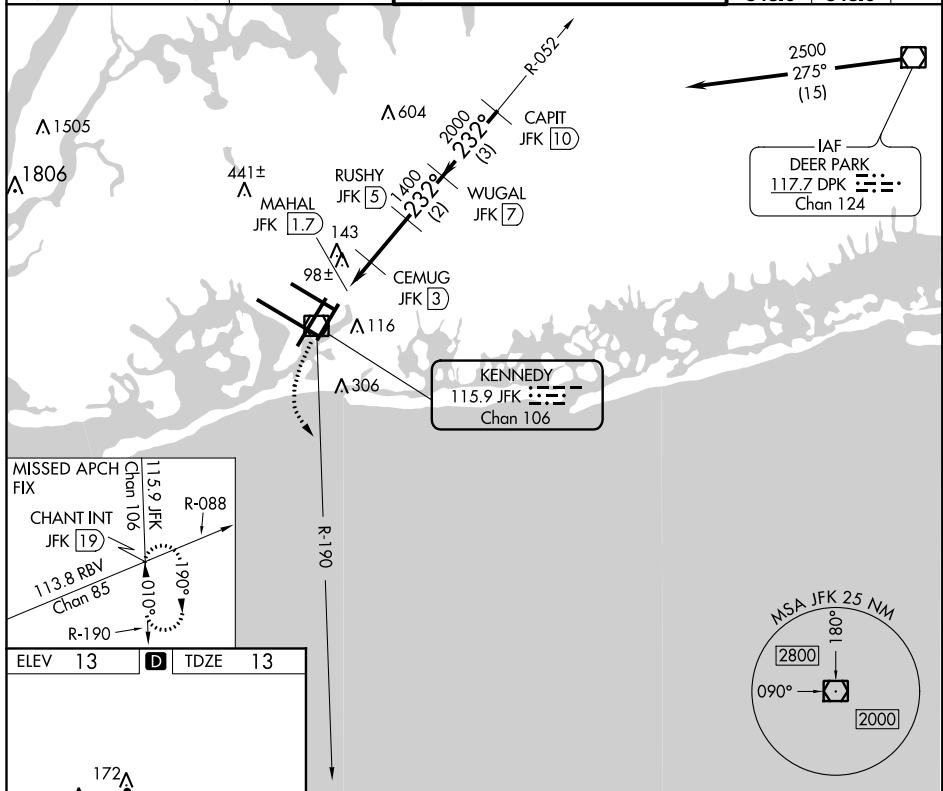


VOR/DME RWY 22L  
JOHN F KENNEDY INTL (JFK)



**MISSED APPROACH:** Climbing left turn to 3000  
via JFK R-190 to CHANT INT/19 DME and hold.

| D-ATIS<br>(ARR/DEP) (ARR-NE) (ARR-SW) |       |       | NEW YORK APP CON |       | KENNEDY TOWER           |       |        | GND CON | CLNC DEL | CPDLC |
|---------------------------------------|-------|-------|------------------|-------|-------------------------|-------|--------|---------|----------|-------|
| 128.725                               | 117.7 | 115.4 | 128.12           | 269.0 | Rwys 4R/22L and 13L/31R | 119.1 | 281.55 | 121.9   | 135.05   |       |
|                                       |       |       |                  |       | Rwys 4L/22R and 13R/31L | 123.9 | 281.55 | 348.6   | 348.6    |       |



REIL Rwy 4L  
RLLS Rwy 13R  
HIRL all Rwy's  
TDZ/CL Rwy's 4R, 13L, 31R and 22L

3000  
JFK  
R-190

CHANT  
INT

CEMUG  
JKF (3)

RUSHY  
JKF (5)

WUGAL  
JKF (7)

CAPIT  
JKF (10)

JFK  
VOR/DME

MAHAL  
JKF (1.7)

JFK  
(2.4)

232°

2500

1400

2000

600

3.14°  
TCH 69

Procedure  
Turn  
NA

0.6 0.7 0.6 2 NM 2 NM 3 NM

| CATEGORY | A      | B           | C                      | D                     |
|----------|--------|-------------|------------------------|-----------------------|
| S-22L    | 440/24 | 427 (500-½) | 440/40<br>427 (500-¾)  | 440/50<br>427 (500-1) |
| CIRCLING | 640-1  | 627 (700-1) | 640-1¼<br>627 (700-1¼) | 640-2<br>627 (700-2)  |

NE-2, 07 DEC 2017 to 04 JAN 2018

NE-2, 07 DEC 2017 to 04 JAN 2018