

WAAS CH <b>97318</b> <b>W22A</b>	APP CRS <b>225°</b>	Rwy Idg TDZE <b>13</b> Apt Elev <b>13</b>
--	------------------------	---

RNAV (GPS) Y RWY 22L

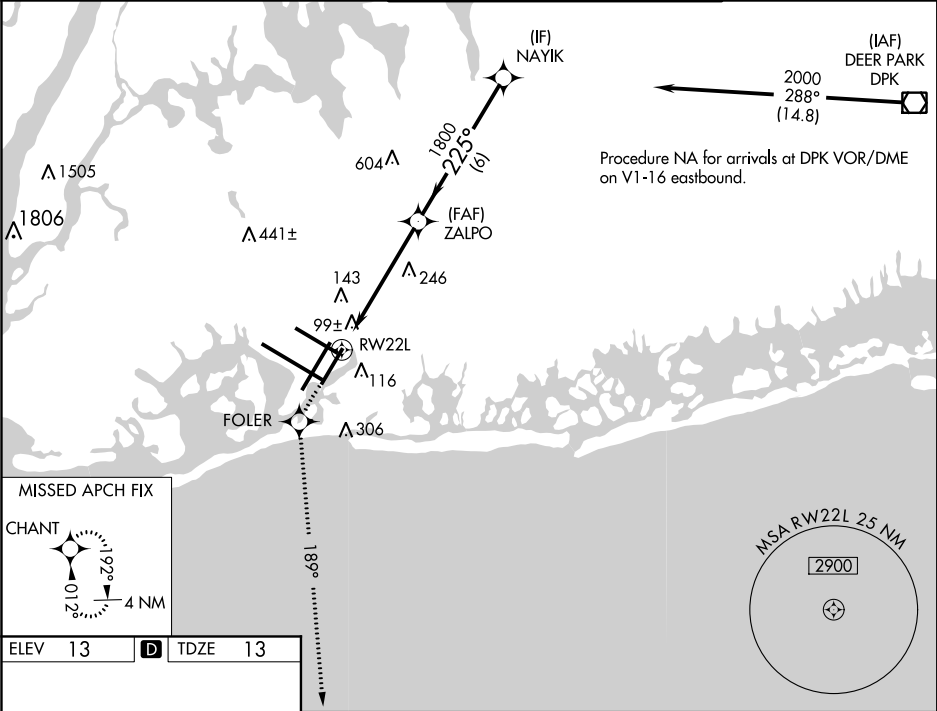
JOHN F KENNEDY INTL (JFK)

⚠ For uncompensated Baro-VNAV systems, LNAV/VNAV NA below -13°C (8°F) or above 49°C (120°F). DME/DME RNP-0.3 NA. Simultaneous approach authorized with Rwy 22R. LNAV procedure NA during simultaneous operations. Use of FD or AP providing RNAV track guidance required during simultaneous operations.

ALSF-2

MISSED APPROACH: Climb to 3000 direct FOLER and on 189° track to CHANT and hold.

D-ATIS			NEW YORK APP CON		KENNEDY TOWER		GND CON	CLNC DEL	CPDLC
(ARR/DEP)	(ARR-NE)	(ARR-SW)			Rwys 4R/22L and 13L/31R				
128,725	117.7	115.4	128.12	269.0	119.1 281.55	123.9 281.55	121.9 348,6	135,05 348,6	



ELEV 13

**D**

TDZE 13

3000	FOLER	189° tr	CHANT	VGSI and RNAV glidepath not coincident (VGSI Angle 3.00/TCH 66).	
*LNAV only.		*1.5 NM to RWY 22L	ZALPO	NAYIK	2000
		3.9 NM	6 NM	Procedure Turn NA	GP 3.00° TCH 53
CATEGORY	A	B	C	D	
LPV DA	270/18		257 (300-½)		
LNAV/VNAV DA	420/50		407 (500-1)		
LNAV MDA	560/24	547 (600-½)	560/50	547 (600-1)	560/60
			547 (600-1¼)		547 (600-1¼)
CIRCLING	640-1	627 (700-1)	640-1¾	627 (700-1¾)	640-2
			627 (700-2)		627 (700-2)