

APP CRS	Rwy Idg	<b>8400</b>
<b>225°</b>	TDZE	<b>12</b>
	Apt Elev	<b>14</b>

## RNAV (RNP) Z RWY 22L

JOHN F KENNEDY INTL (JFK)

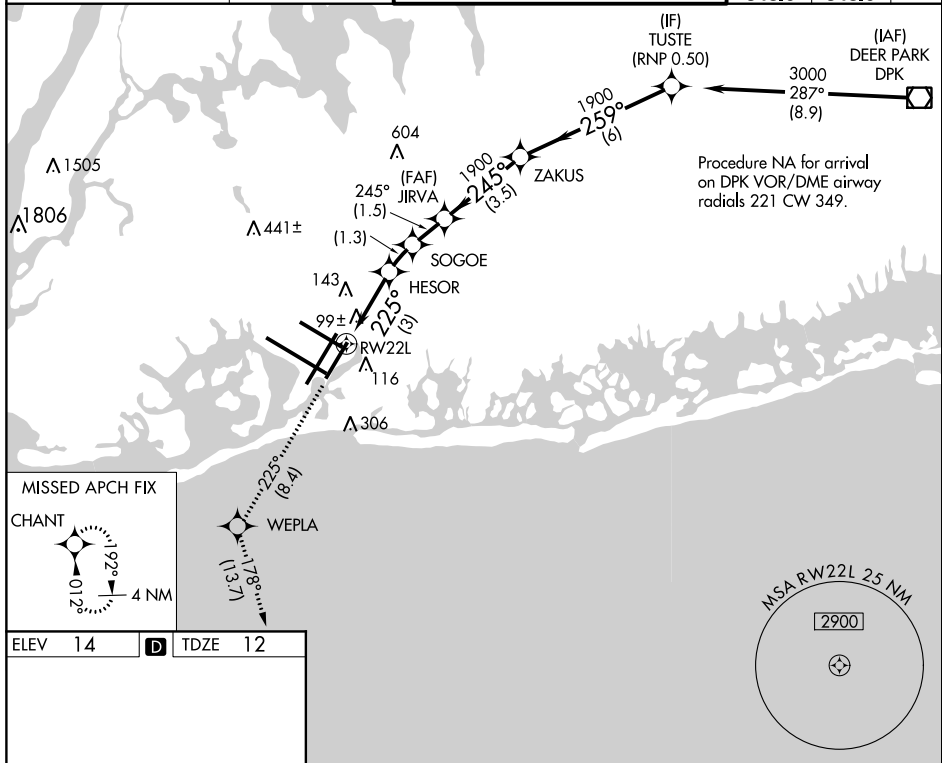
**T** For uncompensated Baro-VNAV systems, procedure NA below -12°C (11°F) or above 54°C (130°F). RF required. GPS required. Simultaneous operations authorized. Use of FD or ALP providing RNAV track guidance required during simultaneous operations. For inop ALP, increase RNP 0.20 and RNP 0.30 all Cats visibility to RVR 6000.

ALSF-2

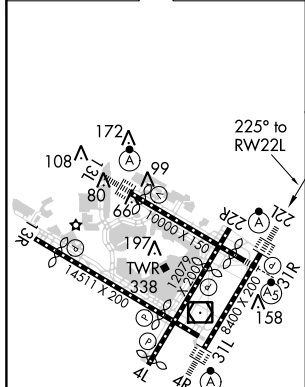


**MISSED APPROACH:** Climb to 3000 on track 225° to WEPLA and on track 178° to CHANT and hold.

D-ATIS (ARR/DEP) (ARR-NE) (ARR-SW)			NEW YORK APP CON		KENNEDY TOWER			GND CON	CLNC DEL	CPDLC
128.725	117.7	115.4	128.12	269.0	Rwys 4R/22L and 13L/31R	119.1	281.55	121.9	135.05	
					Rwys 4L/22R and 13R/31L	123.9	281.55	348.6	348.6	



ELEV	14	<b>D</b>	TDZE	12
------	----	----------	------	----



3000 ↑	WEPLA tr 225°	CHANT tr 178°	VGSI and RNAV glidepath not coincident (VGSI Angle 3.00/TCH 66).		
CATEGORY	A		B		D
RNP 0.20 DA			316/40		304 (400-¾)
RNP 0.30 DA			405/40		393 (400-¾)