

PARCH TWO ARRIVAL (RNAV)

AL-610 (FAA)

NEW YORK, NEW YORK

NE-2, 07 DEC 2017 to 04 JAN 2018

NEW YORK APP CON
125.7 269.0
JOHN F KENNEDY INTL D-ATIS
128.725 (ARR/DEP)
117.7 (ARR-NE)
115.4 (ARR-SW)

ARRIVAL ROUTE DESCRIPTION

KENNEBUNK TRANSITION (ENE.PARCH2):
PLYMM TRANSITION (PLYMM.PARCH2):
SANDY POINT TRANSITION (SEY.PARCH2):

From PARCH via 266° track to CCC VOR/DME. Then via 230° track to ROBER. Thence....

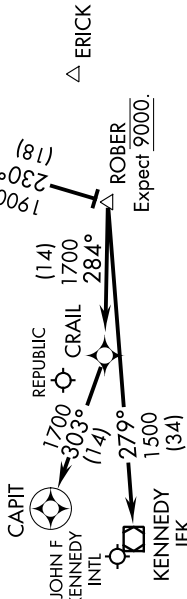
LDG Rwy 4R/L, Rwy 13R/L, Rwy 31R/L: From ROBER via 279° track to JFK VOR/DME, expect radar vectors to final approach course.

LDG Rwy 22R/L: From ROBER via 284° track to CRAIL. Then via 303° track to CAPIT, expect radar vectors to final approach course.

LDG Republic (FRG) Airport: Approaching ROBER expect radar vectors to final approach course.

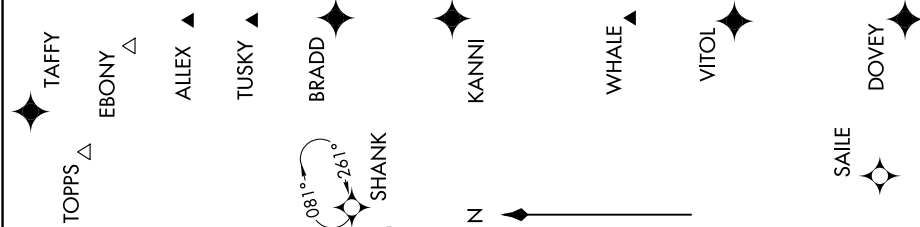
CALVERTON
CCC

Expect 12000 and 250K.



NOTE: Chart not to scale.

NOTE: Procedure applicable to Turbojet aircraft only.
NOTE: Use caution - Parachute jump activity Southeast of CCC VOR/DME at and below 13500' (SR-SS).
NOTE: RADAR Required.
NOTE: RNAV 1.
NOTE: DME/DME/IRU or GPS Required.



PARCH TWO ARRIVAL (RNAV)

(PARCH.PARCH2) 21JUL16

NEW YORK, NEW YORK

NE-2, 07 DEC 2017 to 04 JAN 2018