
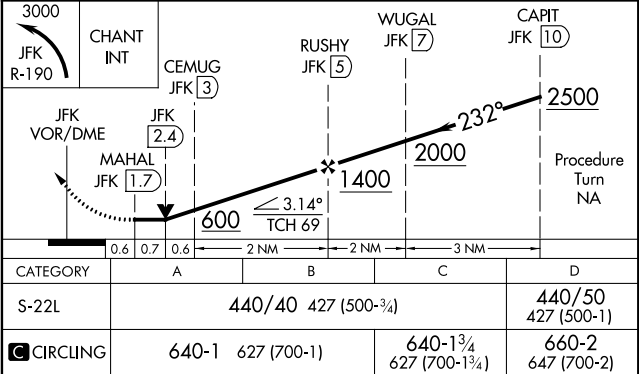
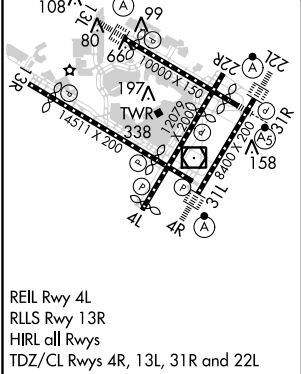
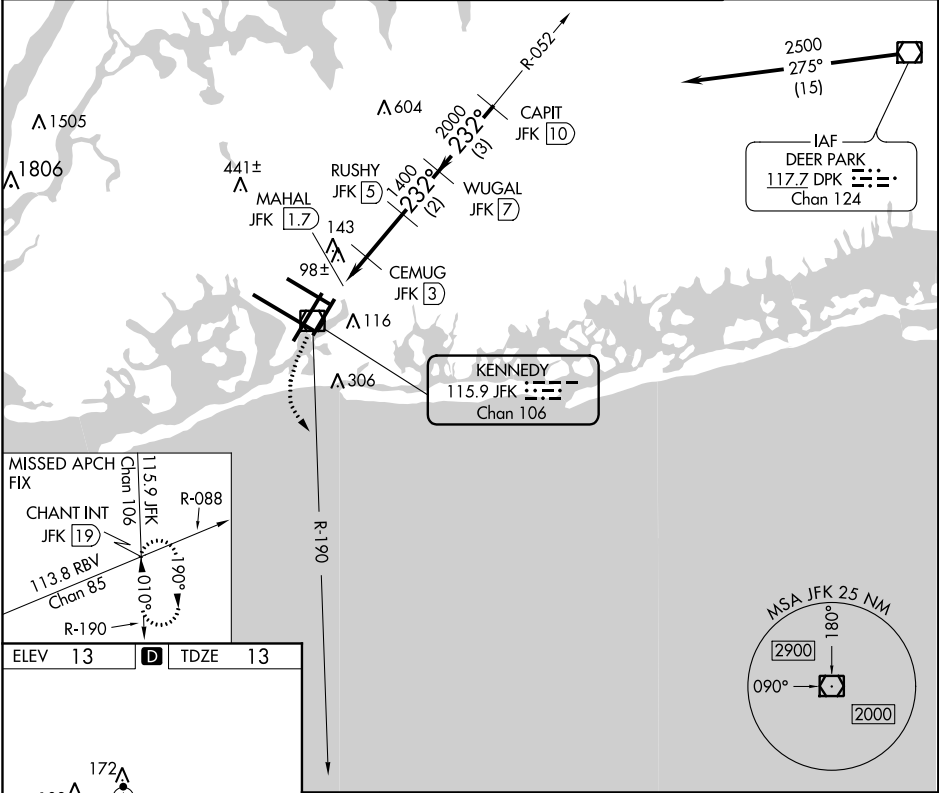


VOR/DME JFK	APP CRS	Rwy Idg
115.9	232°	8400
Chan 106		TDZE 13
		Apt Elev 13

VOR/DME RWY 22L
JOHN F KENNEDY INTL (JFK)

 Rwy 22L helicopter visibility reduction below RVR 4000 NA. For inop ALS, increase S-22L Cat A/B visibility to RVR 5500.	MISSED APPROACH: Climbing left turn to 3000 via JFK R-190 to CHANT INT/19 DME and hold.
--	--

D-ATIS (ARR/DEP) (ARR-NE) (ARR-SW)	NEW YORK APP CON	KENNEDY TOWER Rwys 4R/22L and 13L/31R Rwys 4L/22R and 13R/31L	GND CON	CLNC DEL	CPDLC
128.725 117.7 115.4	128.125 269.0	119.1 281.55 123.9 281.55	121.9 135.05 348.6	135.05 348.6	



NE-2: 06 DEC 2018 to 03 JAN 2019

NE-2: 06 DEC 2018 to 03 JAN 2019