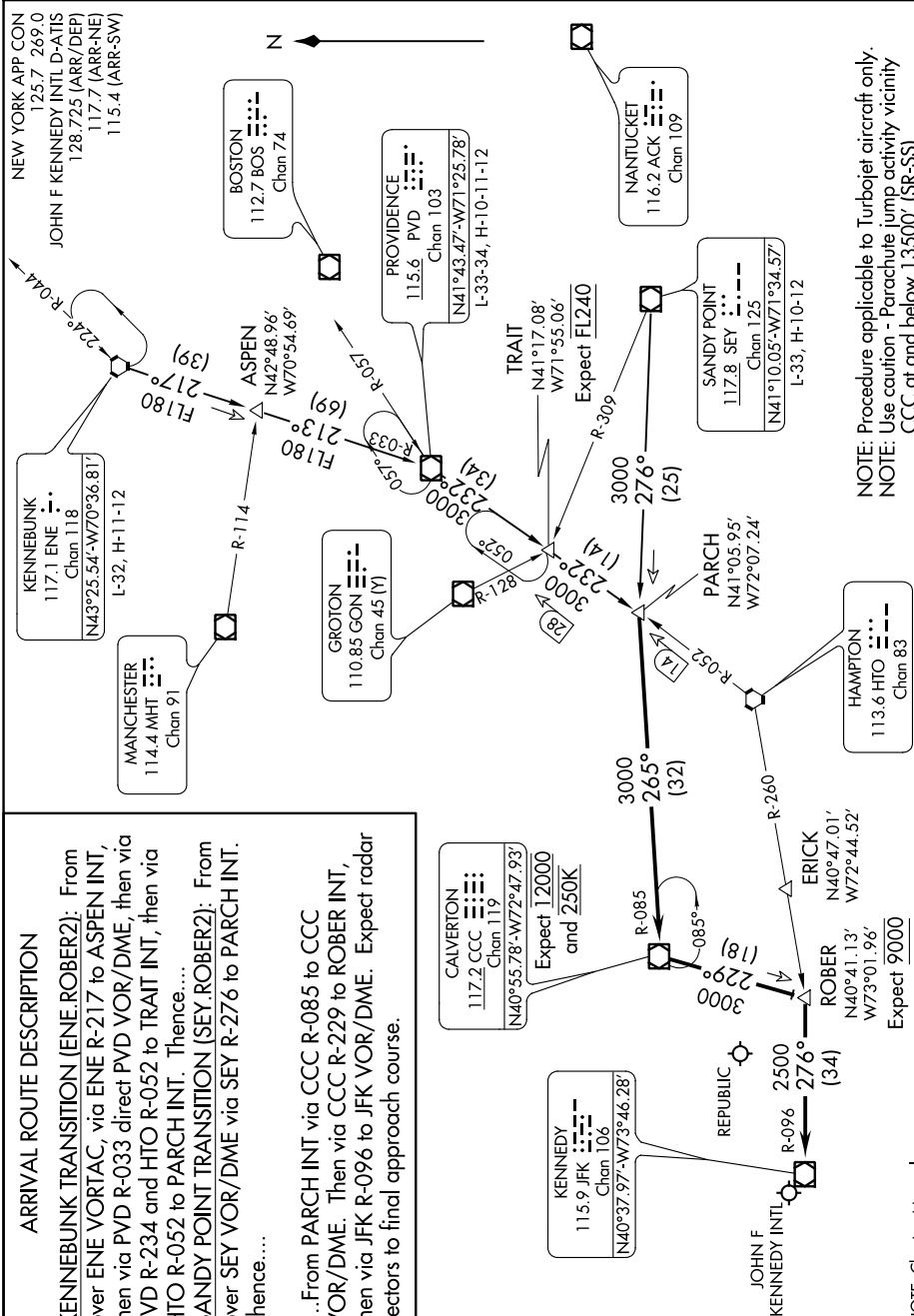


ARRIVAL ROUTE DESCRIPTION

KENNEBUNK TRANSITION [ENE.ROBER2]: From
over ENE VORTAC, via ENE R-217 to ASPEN INT,
then via PVD R-033 direct PVD VOR/DME, then via
PVD R-234 and HTO R-052 to TRAIT INT, then via
HTO R-052 to PARCH INT. Thence....
SANDY POINT TRANSITION [SEY.ROBER2]: From
over SEY VOR/DME via SEY R-276 to PARCH INT.
Thence....

.....From PARCH INT via CCC R-085 to CCC VOR/DME. Then via CCC R-229 to ROBER INT, then via JFK R-096 to JFK VOR/DME. Expect radar vectors to final approach course.



NOTE: Procedure applicable to Turbojet aircraft only.
NOTE: Use caution - Parachute jump activity vicinity CCC at and below 13500' (SR-SS).

NOTE: Chart not to scale.