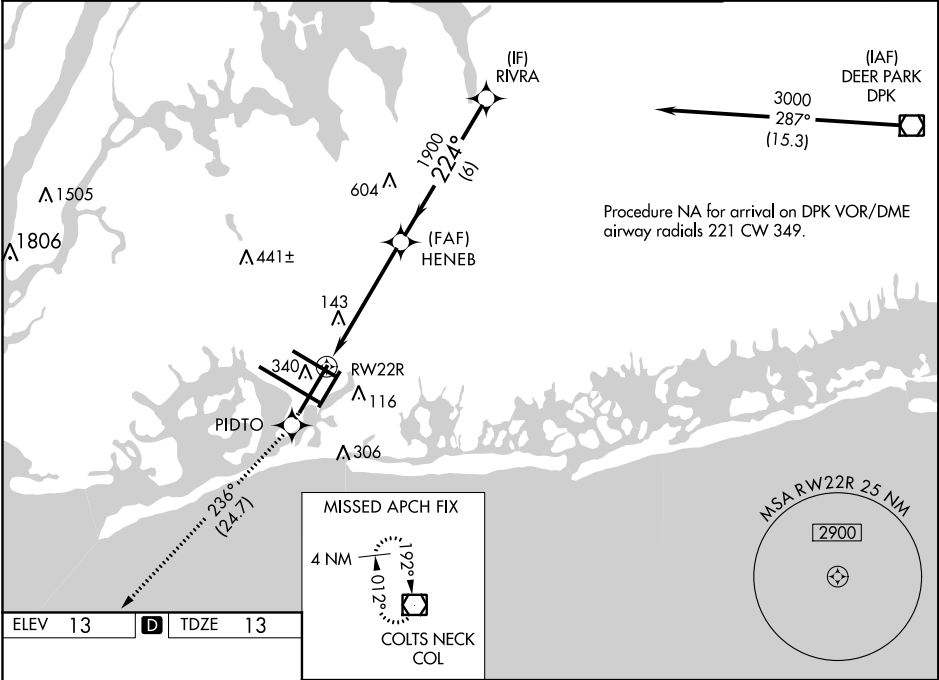


WAAS CH 40019 W22B	APP CRS 224°	Rwy Idg 7795 TDZE 13 Apt Elev 13
--	------------------------	---

RNAV (GPS) RWY 22R
JOHN F KENNEDY INTL (JFK)

RNP APCH. ▼ For uncompensated Baro-VNAV systems, LNAV/VNAV NA below -12°C (11°F) or above 54°C (130°F). Simultaneous approach authorized. Use of FD or AP providing RNAV track guidance required during simultaneous operations. LNAV procedure NA during simultaneous operations.			MISSED APPROACH: Climb to 4000 direct PIDTO and on track 236° to COL VOR/DME and hold.		
D-ATIS (ARR/DEP) (ARR-NE) (ARR-SW) 128.725 117.7 115.4	NEW YORK APP CON 128.125 269.0	KENNEDY TOWER Rwys 4R/22L and 13L/31R 119.1 281.55 Rwys 4L/22R and 13R/31L 123.9 281.55	GND CON 121.9 348.6	CLNC DEL 135.05 348.6	CPDLC



ELEV 13	D	TDZE 13
4000 PIDTO		COL
*LNAV only.		
RWY 22R		
1.7 NM		4 NM
6 NM		
CATEGORY	A	B
LPV DA	269/40	256 (300-34)
LNAV/VNAV DA	501-1 ⁵ / ₈	488 (500-1%)
LNAV MDA	600/50 587 (600-1)	600-1 ³ / ₄ 587 (600-1 ³ / ₄)
C CIRCLING	640-1 627 (700-1)	640-1 ³ / ₄ 627 (700-1 ³ / ₄)

NE-2: 05 DEC 2019 to 02 JAN 2020

NE-2: 05 DEC 2019 to 02 JAN 2020