

ILS RWY 22L (CAT II & III)
JOHN F KENNEDY INTL (JFK)

MISSED APPROACH: Climb to 500 then climbing left turn to 3000 on JFK VOR/DME R-190 to CHANT INT/19 DME and hold.

LENDY
FL180
102°
(11.4)

ROUTING TO HAIRR
(not to scale)

(IAF) CIMBL
16000
140°
(8.4)

HAIRR

SEE INSET FOR ROUTING TO HAIRR

KENNEDY
115.9 JFK
Chan 106

MISSED APCH FIX
Chan 106
115.9 JFK

CHANT INT
JFK 19

IM

143 A

116 A

13000 to CEEGL
137°
(14.5)

R-190

MSA JFK 25 NM

2900

1180°

(IF) ROSLY INT
HWY 12
RADAR

604 A

262

1800

22.8°
(5.7)

044°

3000
264°
(5)

LEFER

R-283

4000
314°
(6.6)

3000
283°
(15.1)

IAF DEER PARK
117.7 DPK
Chan 124

HAUPT

7000
039°
(9.6)

DETGY

SEE INSET FOR ROUTING TO DETGY

9000
042°
(3)

TAPPR

10000
04°
(7.9)

CEEGL

ROUTING TO DETGY
(not to scale)

DETGY

024°
(21.7)

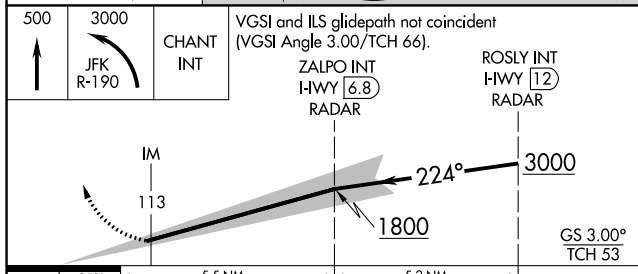
SAJUL

10000
05°
(14)

(IAF) NRTON

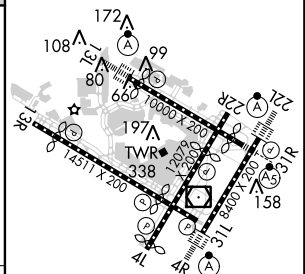
CAMRN

ELEV	13	D	TDZE	12
------	----	----------	------	----



	958	5.5 NM	5.2 NM	
CATEGORY	A	B	C	D
S-ILS 22L	CAT II RA 113/12 100 DA 112			
S-ILS 22L	CAT III RVR 06			

CATEGORY II & III ILS - SPECIAL AIRCREW
& AIRCRAFT CERTIFICATION REQUIRED



REIL Rwy 4L
RLLS Rwys 13L and 13R
HIRL all Rwys
TDZ/CL Rwys 4R, 13L, 22L and 31R