

APP CRS  
**224°**

Rwy Idg **8400**  
TDZE **12**  
Apt Elev **13**

RNAV (RNP) Z RWY 22L

JOHN F KENNEDY INTL (JFK)

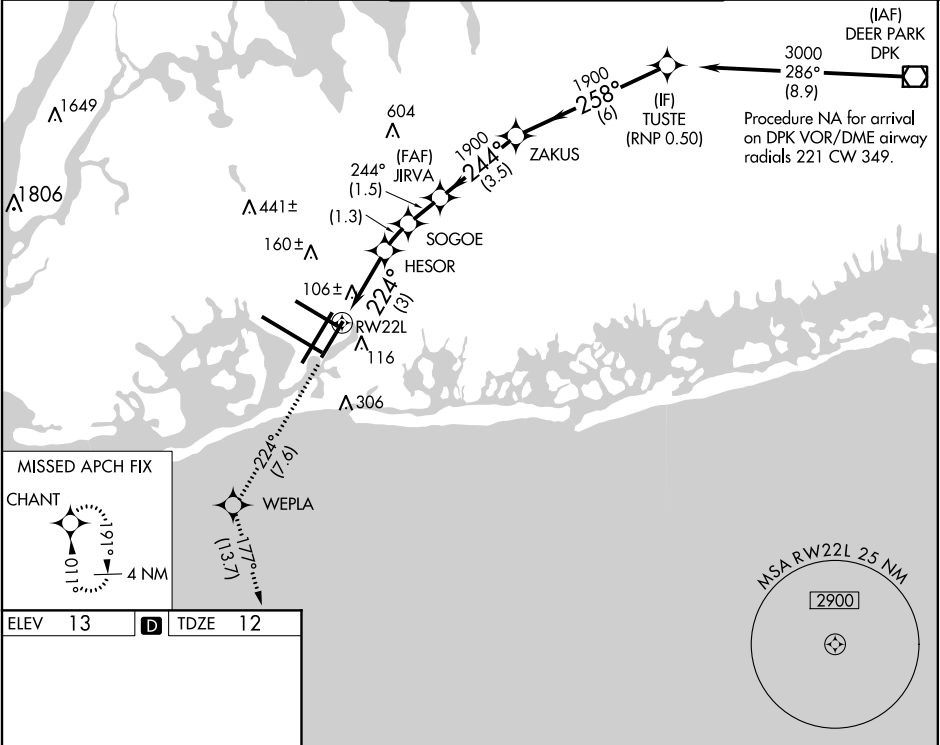
RF required. RNP AR APCH.

⚠ For uncompensated Baro-VNAV systems, procedure NA below -12°C (11°F) or above 54°C (130°F). Simultaneous approach authorized. Use of FD or AP providing RNAV track guidance required during simultaneous operations. For inop ALS, increase RNP 0.20 all Cats visibility to RVR 5500, increase RNP 0.30 all Cats visibility to RVR 6000.

ALSIF-2

MISSED APPROACH: Climb to 3000 on track 224° to WEPLA and on track 177° to CHANT and hold.

D-ATIS			NEW YORK APP CON		KENNEDY TOWER		GND CON	CLNC DEL	CPDLC
(ARR/DEP)	(ARR-NE)	(ARR-SW)			Rwys 4R/22L and 13L/31R				
128.725	117.7	115.4	128.125	269.0	Rwys 4L/22R and 13R/31L	119.1 281.55 123.9 281.55	121.9 348.6	135.05 348.6	



ELEV 13

**D**

TDZE 12

3000

tr 224°

WEPLA

tr 177°

CHANT

VGSI and RNAV glidepath not coincident (VGSI Angle 3.00/TCH 66).

JIRVA

ZAKUS

TUSTE

3000

GP 3.00° TCH 50

3 NM

1.3 NM

1.5 NM

3.5 NM

6 NM

CATEGORY	A	B	C	D
RNP 0.20 DA	361/40	349 (400-¾)		
RNP 0.30 DA	421/40	409 (500-¾)		

AUTHORIZATION REQUIRED