

| | | |
|--|------------------------|---|
| WAAS CH 40019 W22B | APP CRS 224° | Rwy Idg 7794 TDZE 13 Apt Elev 13 |
|--|------------------------|---|

RNAV (GPS) RWY 22R

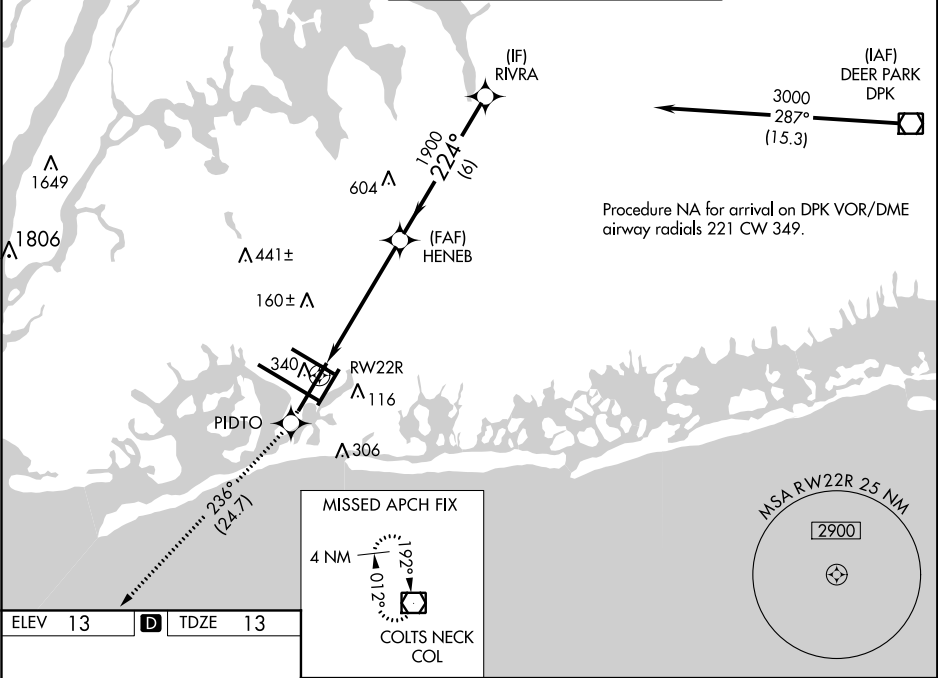
JOHN F KENNEDY INTL (JFK)

RNP APCH.

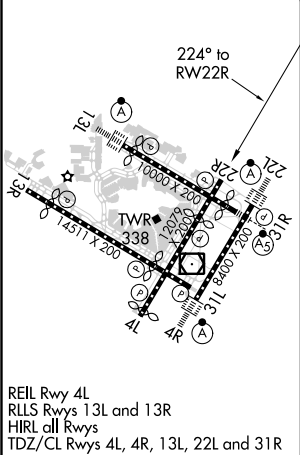
Simultaneous approach authorized. Use of FD or AP providing RNAV track guidance required during simultaneous operations. LNAV procedure NA during simultaneous operations. For uncompensated Baro-VNAV systems, LNAV/VNAV NA below -12°C or above 54°C.




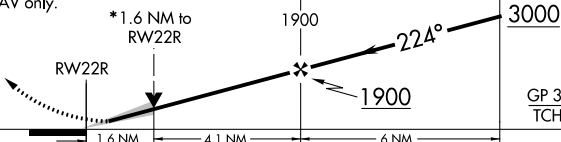

MISSED APPROACH:
Climb to 4000 direct
PIDTO and on track 236°
to COL VOR/DME and hold.

| | | | | | |
|---------------------------------------|------------------|---|-------------|--------------|-------|
| D-ATIS (ARR/DEP) (ARR-NE) (ARR-SW) | NEW YORK APP CON | KENNEDY TOWER Rwys 4R/22L and 13L/31R Rwys 4L/22R and 13R/31L | GND CON | CLNC DEL | CPDLC |
| 128.725 117.7 115.4 | 128.125 269.0 | 119.1 281.55 123.9 281.55 | 121.9 348.6 | 135.05 348.6 | |



| | | |
|---------|----------|---------|
| ELEV 13 | D | TDZE 13 |
|---------|----------|---------|



| | | | | | |
|--|---|------------|---|-------|-------------------|
| 4000 | PIDTO | COL | VGSI and RNAV glidepath not coincident (VGSI Angle 3.00/TCH 77). | | |
|  |  | tr 236° |  | RIVRA | |
| *LNAV only. | | | | | |
|  | | | | | |
| CATEGORY | A | | B | C | D |
| LPV DA | 269/40 256 (300-¾) | | | | |
| LNAV/ VNAV | 501-1½ 488 (500-1½) | | | | |
| LNAV MDA | 600/55 587 (600-1) | | 600-1¾ 587 (600-1¾) | | |
|  CIRCLING | 640-1 627 (700-1) | | 680-1¾ 667 (700-1¾) | | 680-2 667 (700-2) |