

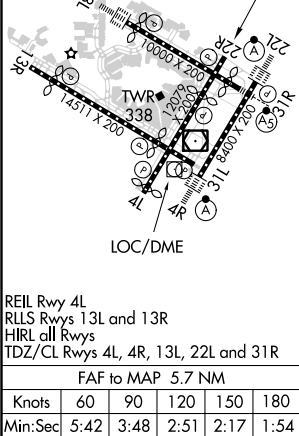
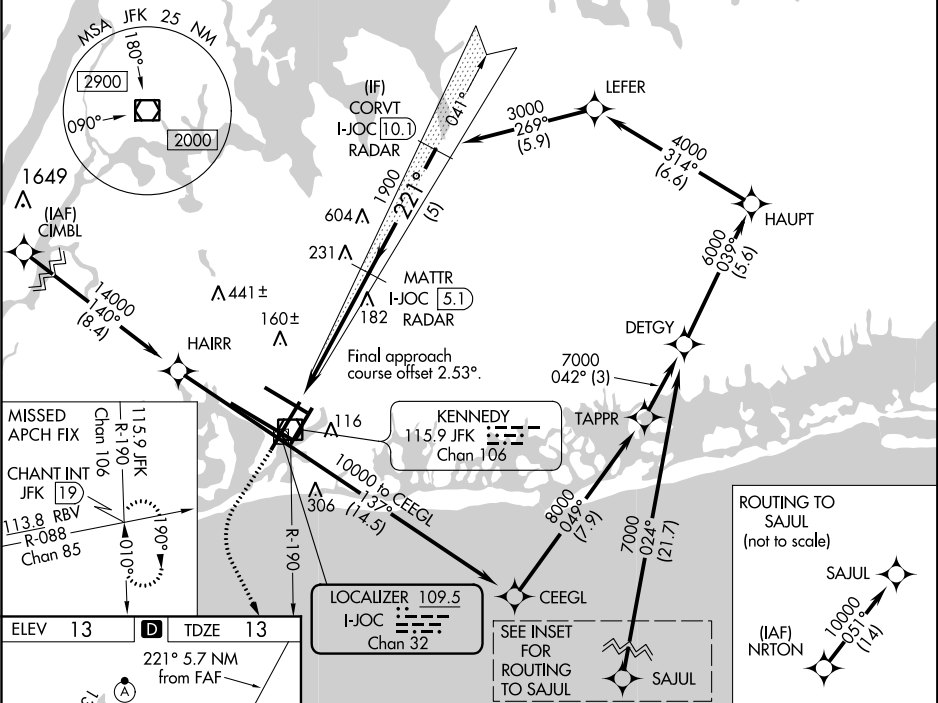
LOC/DME I-JOC	APP CRS	Rwy Idg	7794
109.5	221°	TDZE	13
Chan 32		Apt Elev	13

ILS or LOC RWY 22R

JOHN F KENNEDY INTL (JFK)

RNAV 1-GPS or RADAR required for procedure entry. From CIMBL, NRTON: RNAV 1-GPS required. DME or RADAR required.		MISSED APPROACH: Climb to 2000 then climbing left turn to 4000 on JFK VOR/DME R-190 to CHANT INT and hold.
<div><div><div><div><div></div><div></div></div><div><div></div><div></div></div></div><div><div></div><div></div></div><div><div></div><div></div></div></div></div> <div>Simultaneous approach authorized.</div>		

D-ATIS (ARR/DEP) (ARR-NE) (ARR-SW)	NEW YORK APP CON	KENNEDY TOWER	GND CON	CLNC DEL	CPDLC
128.725 117.7 115.4	128.125 269.0	Rwys 4R/22L and 13L/31R 119.1 281.55 Rwys 4L/22R and 13R/31L 123.9 281.55	121.9 348.6	135.05 348.6	



2000 4000 JFK R-190 CHANT INT		MATTR I-JOC 5.1 RADAR		CORVT I-JOC 10.1 RADAR	
VGSI and ILS glidepath not coincident (VGSI Angle 3.00/TCH 77).		1900 221° 3000		GS 3.00° TCH 59	
5.7 NM		5 NM			
CATEGORY	A	B	C	D	
S-ILS 22R	263/40		250 (300-¾)		
S-LOC 22R	460/55	447 (500-1)	460-1⅓	447 (500-1⅓)	
CIRCLING	640-1 627 (700-1)		680-1¾	680-2	
			667 (700-1¾)	667 (700-2)	