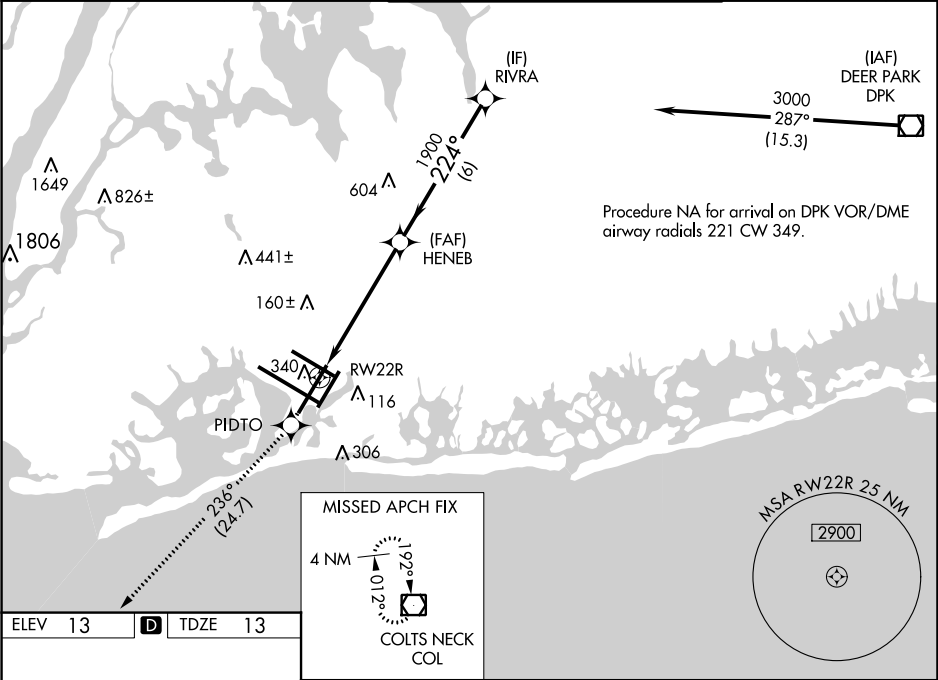


WAAS CH <b>40019</b> <b>W22B</b>	APP CRS <b>224°</b>	Rwy Idg <b>7794</b> TDZE <b>13</b> Apt Elev <b>13</b>
--	------------------------	---

RNAV (GPS) RWY 22R

JOHN F KENNEDY INTL (JFK)

RNP APCH.			MISSED APPROACH: Climb to 4000 direct PIDTO and on track 236° to COL VOR/DME and hold.		
Simultaneous approach authorized. Use of FD or AP providing RNAV track guidance required during simultaneous operations. LNAV procedure NA during simultaneous operations. For uncompensated Baro-VNAV systems, LNAV/VNAV NA below -12°C or above 54°C.					
D-ATIS (ARR/DEP) (ARR-NE) (ARR-SW)	NEW YORK APP CON	KENNEDY TOWER	GND CON	CLNC DEL	CPDLC
<b>128.725 117.7 115.4</b>	<b>128.125 269.0</b>	Rwys 4R/22L and 13L/31R <b>119.1 281.55</b> Rwys 4L/22R and 13R/31L <b>123.9 281.55</b>	<b>121.9 348.6</b>	<b>135.05 348.6</b>	



ELEV 13	D	TDZE 13
MISSED APCH FIX		
COLTS NECK COL		
4000	PIDTO	COL
↑	tr 236°	☐
VGSI and RNAV glidepath not coincident (VGSI Angle 3.00/TCH 77).		
*LNAV only.		
RWY 22R		
HENEB		
RIVRA		
3000		
GP 3.00° TCH 59		
1.6 NM 4.1 NM 6 NM		
CATEGORY	A	B C D
LPV DA	269/40	256 (300-¾)
LNAV/VNAV DA	501-1½	488 (500-1%)
LNAV MDA	600/55 587 (600-1)	600-1¾ 587 (600-1¾)
CIRCLING	640-1 627 (700-1)	680-1¾ 667 (700-1¾) 680-2 667 (700-2)