

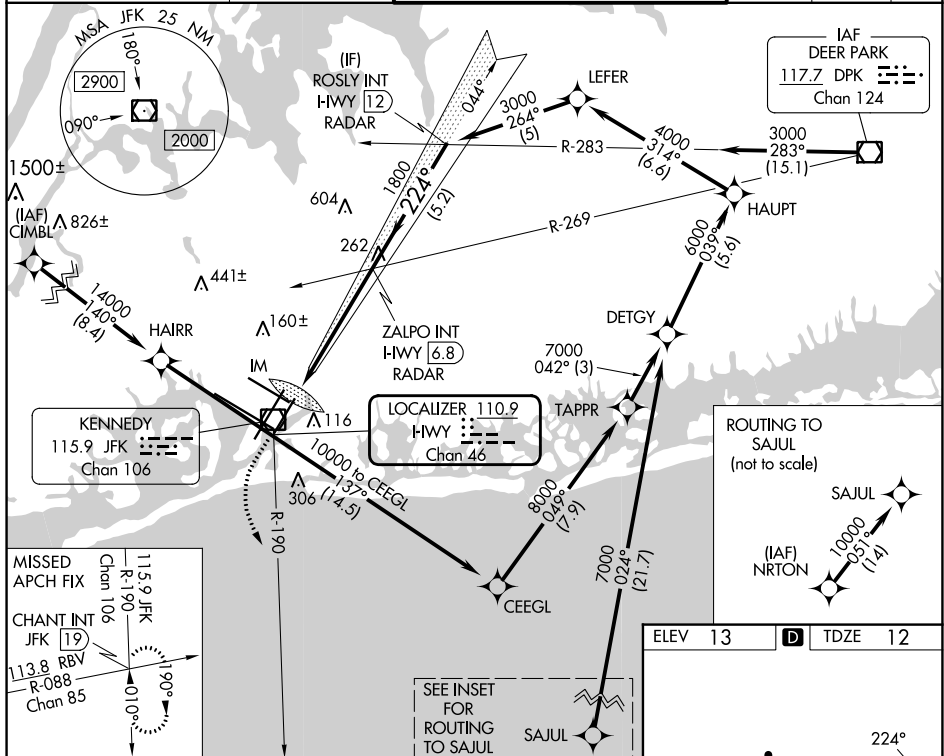
# ILS or LOC RWY 22L

**MISSED APPROACH:** Climb to 500 then climbing left turn to 3000 on JFK VOR/DME R-190 to CHANT INT/19 DME and hold.

**T** Simultaneous approach authorized.



D-ATIS (ARR/DEP) (ARR-NE) (ARR-SW)	NEW YORK APP CON	KENNEDY TOWER		GND CON	CLNC DEL	CPDLC
128.725 117.7 115.4	128.125 269.0	Rwys 4R/22L and 13L/31R Rwys 4L/22R and 13R/31L	119.1 281.55 123.9 281.55	121.9 348.6	135.05 348.6	



<div style="display: flex; justify-content: space-around;"> <div>500 ↑</div> <div>3000 JFK R-190</div> </div>	CHANT INT		VGS1 and ILS glidepath not coincident (VGS1 Angle 3.00/TCH 66).		ROSLY INT HWY <span style="border: 1px solid black; border-radius: 50%; padding: 2px;">12</span> RADAR
* LOC only.	* I-HWY <span style="border: 1px solid black; border-radius: 50%; padding: 2px;">1.4</span>	* I-HWY <span style="border: 1px solid black; border-radius: 50%; padding: 2px;">2.8</span>	ZALPO INT I-HWY <span style="border: 1px solid black; border-radius: 50%; padding: 2px;">5.8</span> RADAR	1800	3000  GS 3.00° TCH 53
CATEGORY	A		B	C	D
S-ILS 22L	212/18 200 (200-1/2)				
S-LOC 22L	520/24	508 (600-1/2)	520/55	508 (600-1)	
<span style="background-color: black; color: white; padding: 2px;">C</span> CIRCLING	640-1	627 (700-1)	680-13/4 667 (700-13/4)	680-2 667 (700-2)	

