

NEW YORK, NEW YORK

AL-610 (FAA)

VOR/DME JFK	APP CRS	Rwy Idg	8400
115.9	232°	TDZE	13
Chan 106		Apt Elev	13

VOR/DME RWY 22L

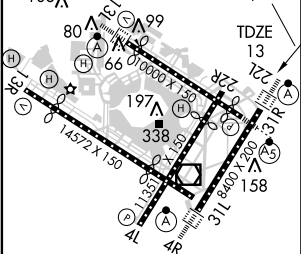
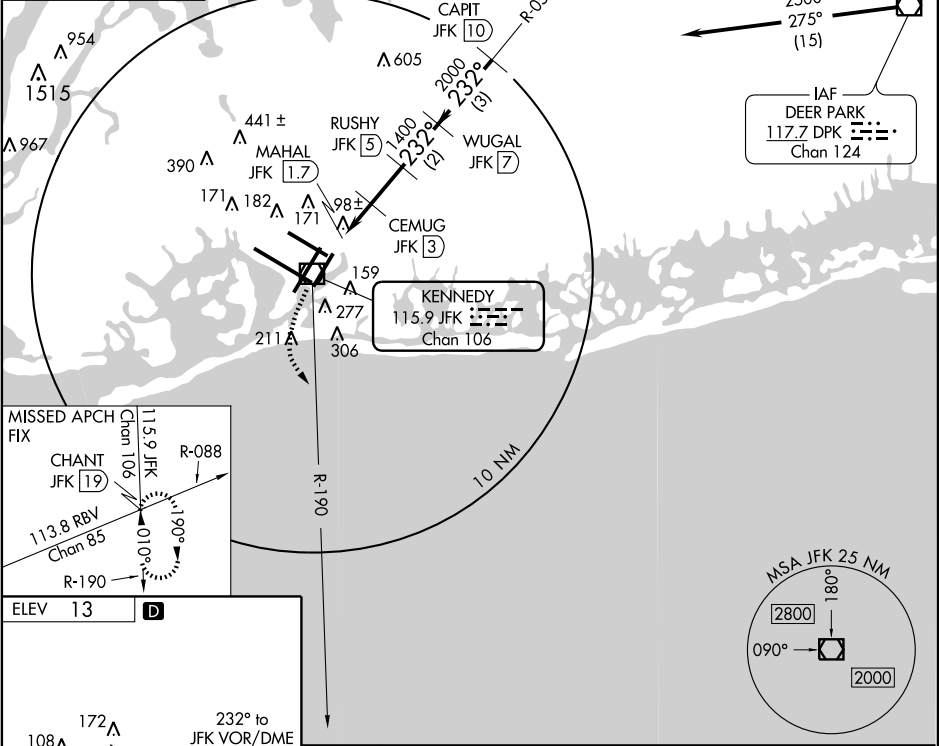
NEW YORK / JOHN F. KENNEDY INTL (JFK)

**V**

**ALSF-2**

MISSED APPROACH: Climbing left turn to 3000
via JFK R-190 to CHANT Int/19 DME and hold.

ARR	ATIS (NE) (SW)	NEW YORK APP CON	KENNEDY TOWER	GND CON	CLNC DEL
128.725	117.7 115.4	127.4 269.0	Rwys 4R/22L and 13L/31R 119.1 281.55 Rwys 4L/22R and 13R/31L 123.9 281.55	121.9 348.6	135.05
DEP					
115.1					



ELEV	13	D
REIL Rwy 4L		
HIRL Rwy 4L-22R		
4R-22L, 13R-31L, and 13L-31R		
TDZ/CL Rwy 4R, 13L, 31R and 22L		

3000	CHANT INT	CEMUG JFK 3	RUSHY JFK 5	WUGAL JFK 7	CAPIT JFK 10
JFK R-190 115.9	JFK 2.4	JFK 1.7	JFK 2.4	JFK 2.4	JFK 2.4
VOR/DME	MAHAL JFK 1.7	JFK 2.4	JFK 2.4	JFK 2.4	JFK 2.4
232° to JFK VOR/DME	232°	232°	232°	232°	232°
TDZE 13	600	1400	2000	2500	2500
3.14°	2 NM	2 NM	3 NM	3 NM	3 NM
TCH 69					
Procedure Turn NA					
CATEGORY	A	B	C	D	
S-22L	440/24 427 (500-½)		440/40 427 (500-¾)	440/50 427 (500-1)	
CIRCLING	640-1 627 (700-1)		640-1¾ 627 (700-1¾)	640-2 627 (700-2)	

NEW YORK, NEW YORK
Amdt 4D 08325

VOR/DME RWY 22L

NEW YORK / JOHN F. KENNEDY INTL (JFK)

40°38'N - 73°47'W

NE-2, 20 NOV 2008 to 18 DEC 2008

NE-2, 20 NOV 2008 to 18 DEC 2008