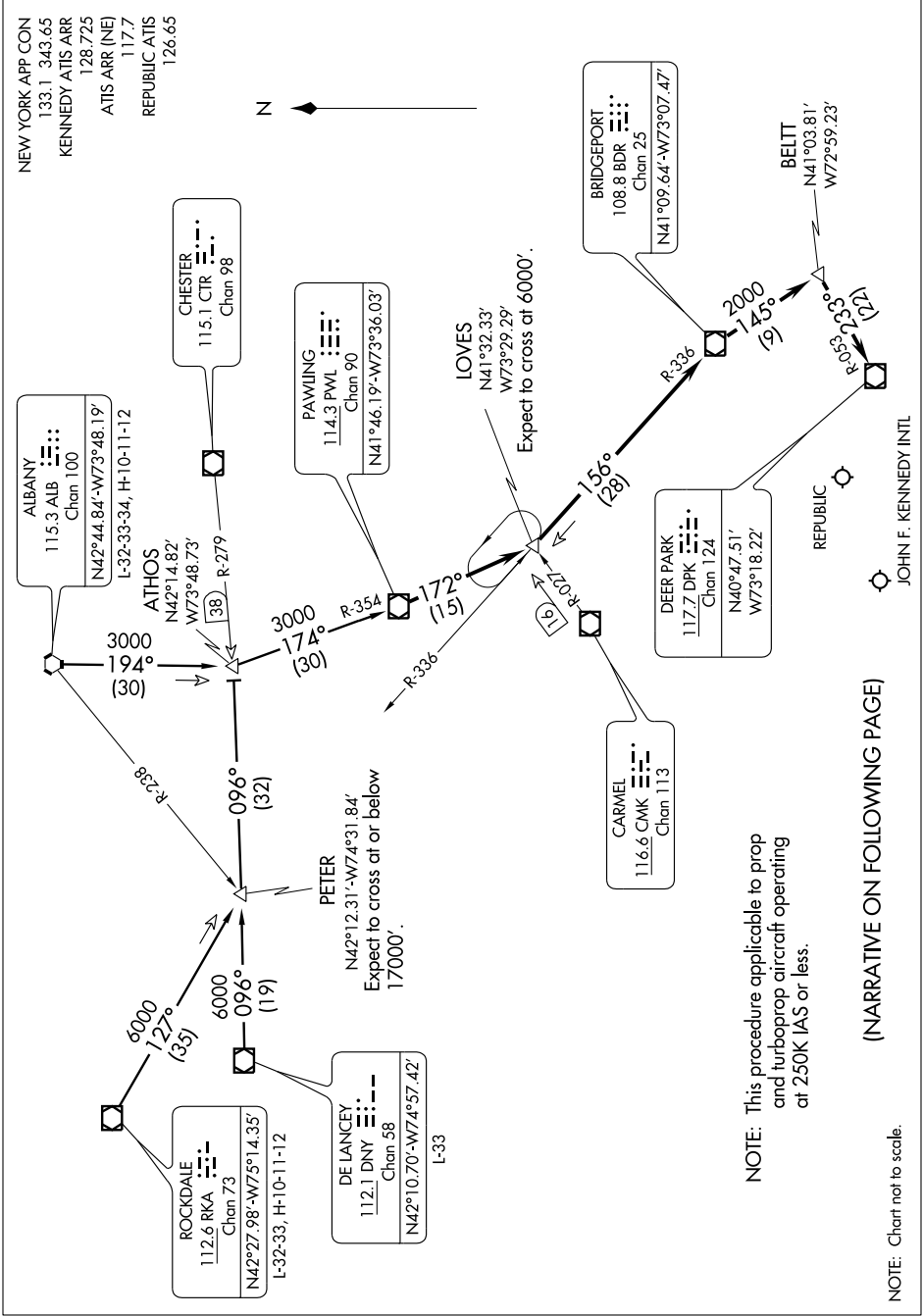


PAWLING TWO ARRIVAL

NEW YORK, NEW YORK

NE-2, 20 NOV 2008 to 18 DEC 2008



PAWLING TWO ARRIVAL

NEW YORK, NEW YORK

NE-2, 20 NOV 2008 to 18 DEC 2008

(NARRATIVE ON FOLLOWING PAGE)