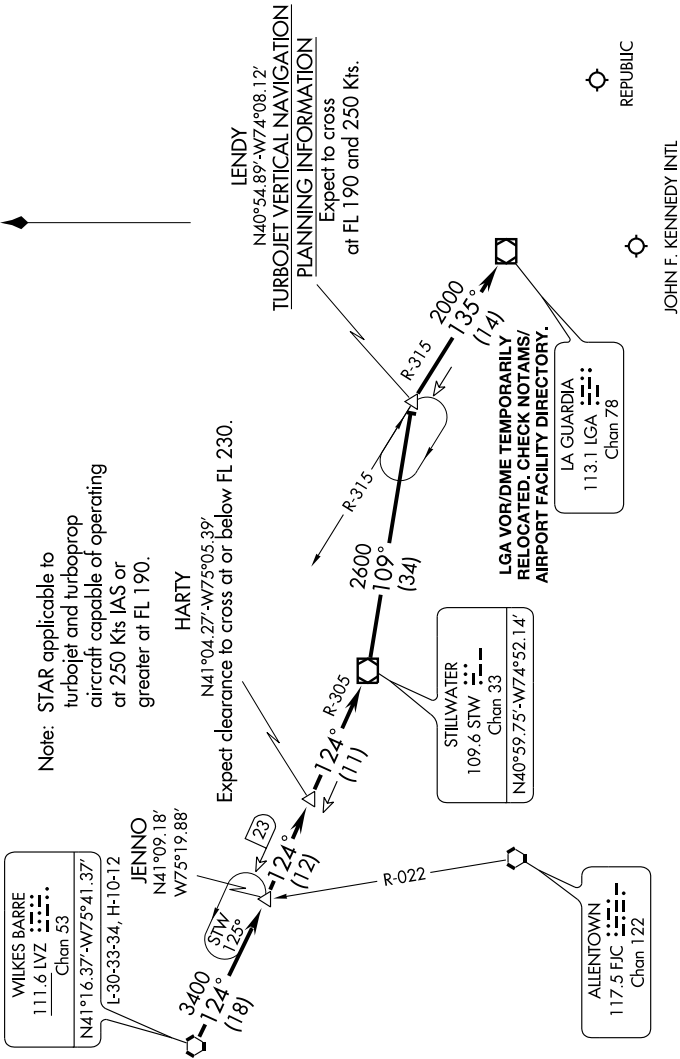


LENDY FIVE ARRIVAL

NEW YORK, NEW YORK

NE-2, 20 NOV 2008 to 18 DEC 2008

NEW YORK APP CON  
127.4 269.0  
KENNEDY INTL ATIS ARR 128.725  
(NE) 117.7 (SW) 115.4  
REPUBLIC ATIS  
126.65



From over LVZ VORTAC via LVZ R-124 and STW R-305 to STW VOR/DME, then from STW VOR/DME via STW R-109 to LENDY INT via LGA R-315 to LGA VOR/DME. Expect radar vectors to final approach course after LGA VOR/DME.

NOTE: Chart not to scale.

NE-2, 20 NOV 2008 to 18 DEC 2008

LENDY FIVE ARRIVAL

NEW YORK, NEW YORK