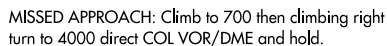


AL-610 (FAA)

| | | |
|--|------------------------|---|
| LOC/DME I-JOC 109.5 Chn 32 | APP CRS 222° | Rwy Idg 8655 TDZE 13 Apt Elev 13 |
|--|------------------------|---|

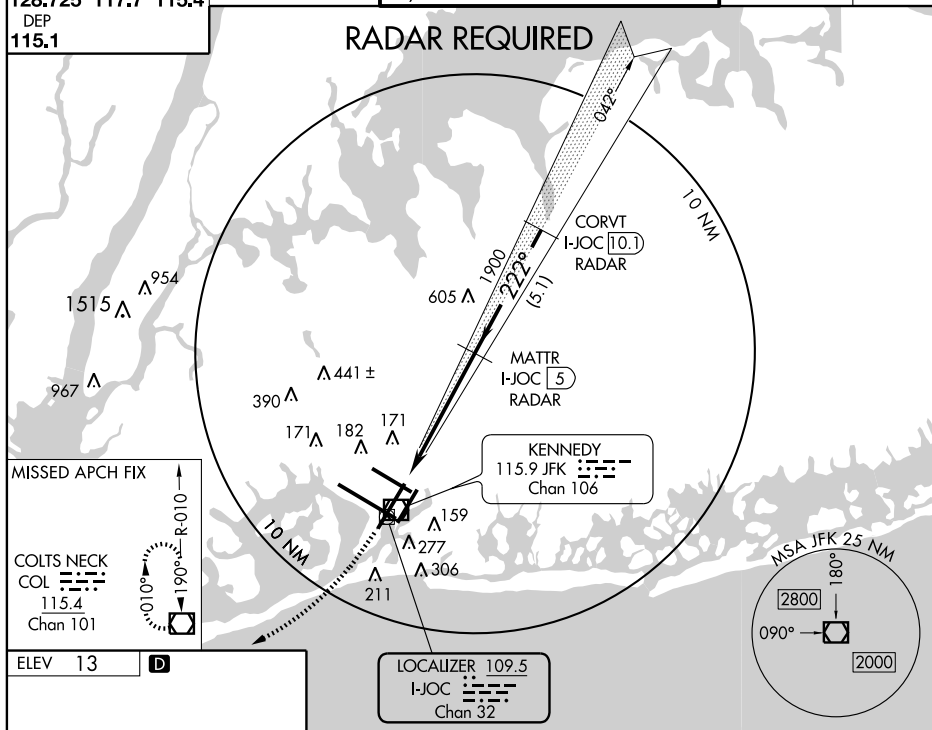
ILS RWY 22R

NEW YORK / JOHN F. KENNEDY INTL (JFK)



| | | | | | | | | | |
|-------------------|-------|-------|------------------|-------|-------------------------|-------|--------|---------|----------|
| ATIS (NE) (SW) | | | NEW YORK APP CON | | KENNEDY TOWER | | | GND CON | CLNC DEL |
| ARR | | | 127.4 | 269.0 | Rwys 4R/22L and 13L/31R | 119.1 | 281.55 | 121.9 | 348.6 |
| 128.725 | 117.7 | 115.4 | | | Rwys 4L/22R and 13R/31L | 123.9 | 281.55 | | 135.05 |

RADAR REQUIRED

[illegible][illegible]

NEW YORK, NEW YORK

Amdt 2 08325

NEW YORK / JOHN F. KENNEDY INTL (JFK)

40°38'N - 73°47'W

ILS RWY 22R

NE-2, 20 NOV 2008 to 18 DEC 2008

NE-2. 20 NOV 2008 to 18 DEC 2008