

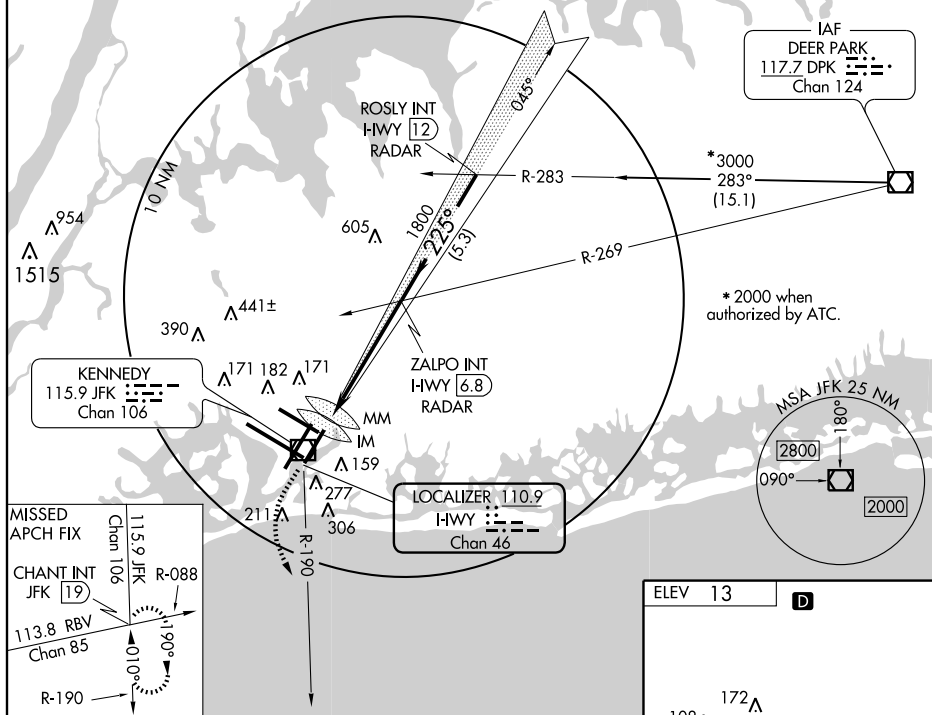
LOC/DME I-HWY <b>110.9</b> Chan <b>46</b>	APP CRS <b>225°</b>	Rwy Idg <b>8400</b> TDZE <b>13</b> Apt Elev <b>13</b>
---	------------------------	---

**ILS RWY 22L (CAT III)**  
NEW YORK/JOHN F. KENNEDY INTL (JFK)



**MISSED APPROACH:** Climb to 500 then climbing left turn to 3000 via JFK R-190 to CHANT Int/19 DME and hold.

ARR	ATIS (NE)	(SW)	NEW YORK APP CON	KENNEDY TOWER		GND CON	CLNC DEL
128.725	117.7	115.4	127.4 269.0	Rwys 4R/22L and 13L/31R	119.1 281.55	121.9 348.6	135.05
DEP				Rwys 4L/22R and 13R/31L	123.9 281.55		
115.1							



500 ↑	3000 ↘ JFK R-190 115.9	CHANT INT	ZALPO INT I-WY <u>(6.8)</u> RADAR	ROSLY INT I-WY <u>(12)</u> RADAR
<p>Diagram details:          - Start: 13 MSL          - Point IM: 117          - Point MM: 248          - Altitude at 1800 NM: 1800          - Heading: 225°          - Note: * 2000 when authorized by ATC.          - End: 3000*          - Procedure Turn NA          - CS 3.00          - TCH 53</p>				
CATEGORY	A	B	C	D
S-ILS 22L		CAT IIIA	RVR 07	
S-ILS 22L		CAT IIIB	RVR 06	
S-ILS 22L		CAT IIIC	NA	

**CATEGORY III ILS - SPECIAL AIRCREW  
& AIRCRAFT CERTIFICATION REQUIRED**

REIL Rwy 4L  
HIRL Rwy 4L-22R,  
4R-22L, 13R-31L, and 13L-31R  
TDZ/CL Rwy 4R, 13L, 31R and 22L