

NEW YORK, NEW YORK

AL-610 (FAA)

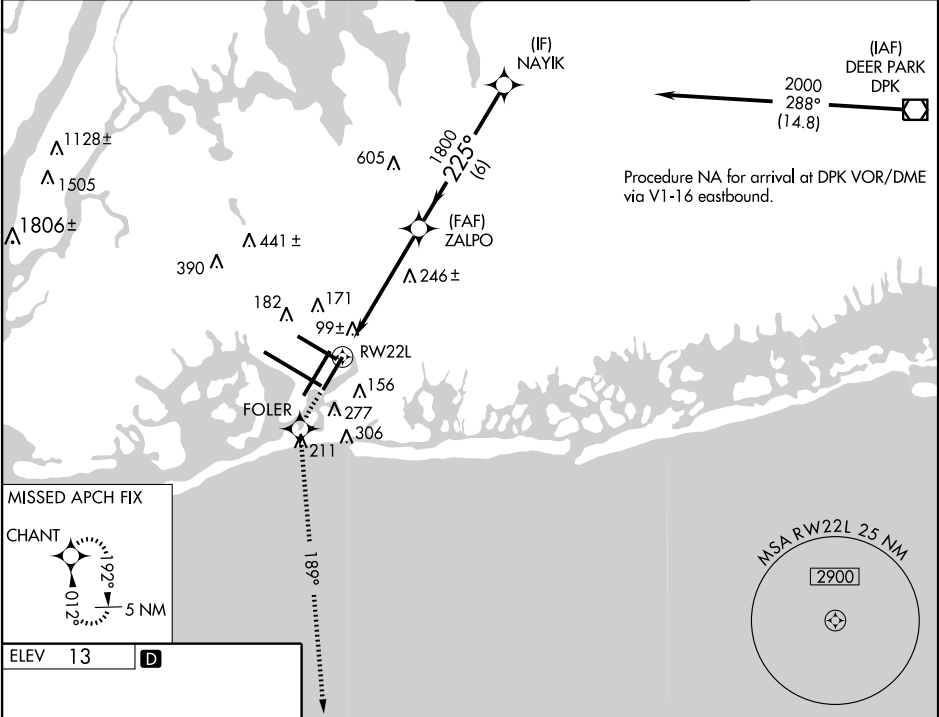
WAAS CH <b>97318</b> <b>W22A</b>	APP CRS <b>225°</b>	Rwy Idg TDZE <b>13</b> Apt Elev <b>13</b>	<b>8400</b>
--	------------------------	---	-------------

# RNAV (GPS) Y RWY 22L

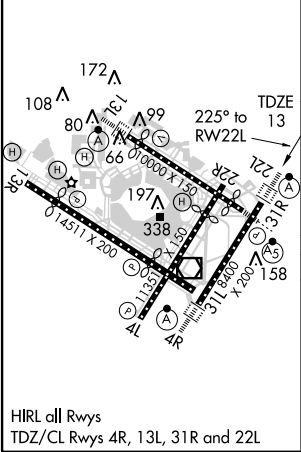
NEW YORK / JOHN F. KENNEDY INTL (JFK)

For uncompensated Baro-VNAV systems, UNAV/VNAV NA below -13°C (8°F) or above 49°C (120°F). DME/DME RNP-0.3 NA.	ALSF-2 	MISSED APPROACH: Climb to 3000 direct FOLER and via 189° track to CHANT and hold.
---	------------	---

ATIS (ARR-NE) (ARR-SW) <b>128.725 117.7 115.4</b>	NEW YORK APP CON <b>127.4 269.0</b>	KENNEDY TOWER Rwys 4R/22L and 13L/31R <b>119.1 281.55</b> Rwys 4L/22R and 13R/31L <b>123.9 281.55</b>	GND CON <b>121.9 135.05</b> <b>348.6</b>	CLNC DEL <b>135.05</b> <b>348.6</b>
---	--	---	--	---



ELEV 13	
---------	--



3000	FOLER	tr 189°	CHANT	VGSI and RNAV glidepath not coincident.	Procedure Turn NA
CATEGORY	A	B	C	D	
LPV DA	270/24		257 (300-1/2)		
LNNAV/VNAV DA	420/50		407 (500-1)		
LNNAV MDA	560/24 547 (600-1/2)		560/50 547 (600-1)		560/60 547 (600-1 1/4)
CIRCLING	640-1 627 (700-1)		640-1 627 (700-1 1/4)		640-2 627 (700-2)

NEW YORK, NEW YORK  
Amdt 1B 10322

NEW YORK / JOHN F. KENNEDY INTL (JFK)  
40°38'N - 73°47'W  
**RNAV (GPS) Y RWY 22L**

NE-2, 18 NOV 2010 to 16 DEC 2010

NE-2, 18 NOV 2010 to 16 DEC 2010