

LOC/DME I-IWY 110.9 Chan 46	APP CRS 225°	Rwy Idg 8400 TDZE 13 Apt Elev 13
---	------------------------	---

ILS or LOC RWY 22L

NEW YORK / JOHN F. KENNEDY INTL (JFK)

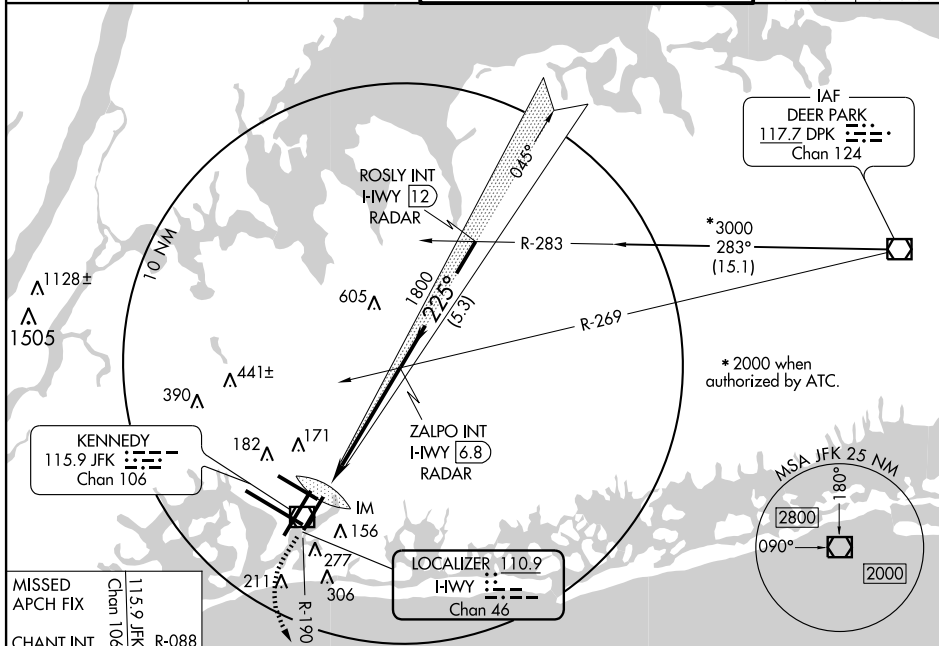


ALSF-2



MISSED APPROACH: Climb to 500 then climbing left turn to 3000 via JFK R-190 to CHANT INT/19 DME and hold.

ATIS (ARR-NE) (ARR-SW)		NEW YORK APP CON		KENNEDY TOWER		GND CON	CLNC DEL
128.725	117.7	115.4	127.4	269.0	Rwys 4R/22L and 13L/31R Rwys 4L/22R and 13R/31L	119.1 281.55 123.9 281.55	121.9 135.05 348.6 348.6



NE-2, 18 NOV 2010 to 16 DEC 2010

NE-2: 18 NOV 2010 to 16 DEC 2010

500
↑

3000
JFK
R-190

CHANT
INT

ZALPO INT
I-WY 6.8
RADAR

1800

225°

3000*

Procedure
Turn
NA

I-WY
1.4

IM

* 2000 when
authorized by ATC.

1800

GS 3.00°
TCH 53

	0.2	5.2 NM	5.3 NM	
CATEGORY	A	B	C	D
S-ILS 22L	213/18 200 (200-½)			
S-LOC 22L	460/24 447 (500-½)		460/40 447 (500-¾)	460/50 447 (500-1)
CIRCLING	640-1 627 (700-1)		640-1¾ 627 (700-1¾)	640-2 627 (700-2)

FAF to MAP 5.4 NM					
Knots	60	90	120	150	180
Min:Sec	5:24	3:36	2:42	2:10	1:48