

NEW YORK, NEW YORK

AL-610 (FAA)

LOC/DME I-JOC	APP CRS	Rwy Idg	8655
109.5	222°	TDZE	13
Chan 32		Apt Elev	13

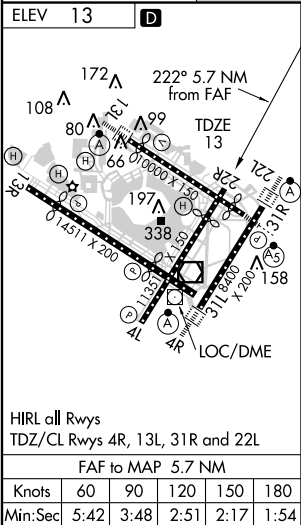
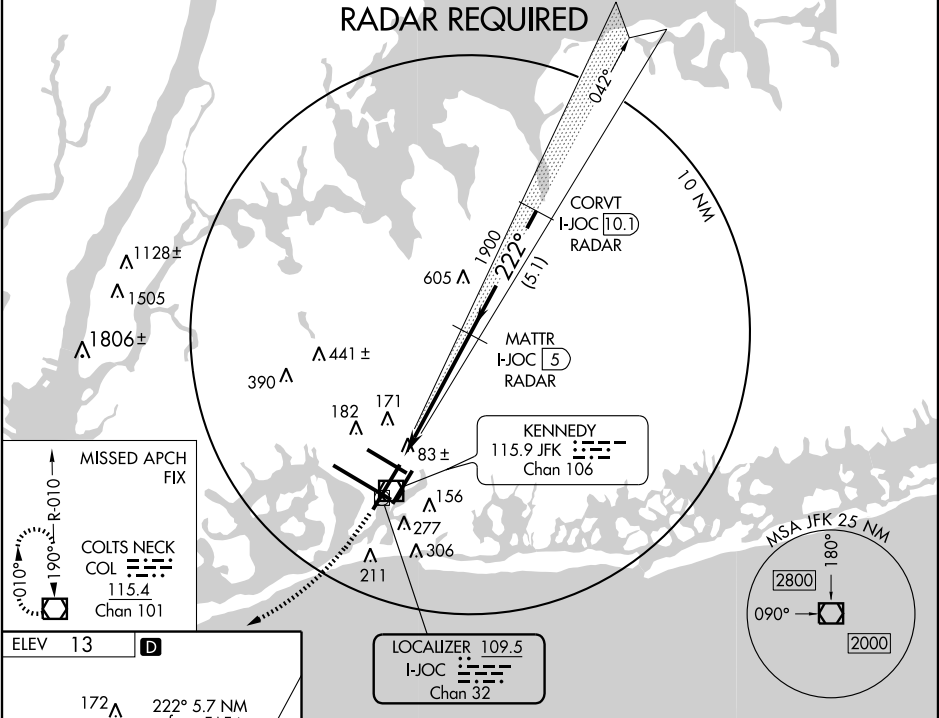
ILS RWY 22R


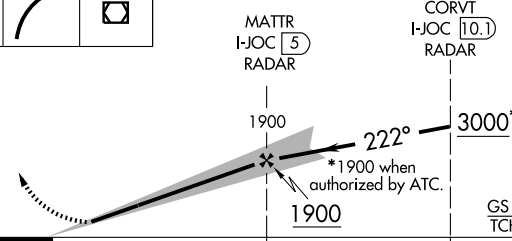
NEW YORK / JOHN F. KENNEDY INTL (JFK)

MISSED APPROACH: Climb to 700 then climbing right turn to 4000 direct COL VOR/DME and hold.

ATIS (ARR-NE)	(ARR-SW)	NEW YORK APP CON	KENNEDY TOWER	GND CON	CLNC DEL
128.725	117.7	115.4	127.4 269.0	Rwys 4R/22L and 13L/31R 119.1 281.55 Rwys 4L/22R and 13R/31L 123.9 281.55	121.9 135.05 348.6 348.6

RADAR REQUIRED



700 ↑	4000 ↗	COL 				
CATEGORY	A	B	C	D		
S-ILS 22R	263/40 250 (300-¾)					
S-LOC 22R	460/50 447 (500-1)	460/60 447 (500-1¼)	460-1½ 447 (500-1½)			
CIRCLING	640-1 627 (700-1)	640-1¾ 627 (700-1¾)	640-2 627 (700-2)			

NEW YORK, NEW YORK  
Amdt 2 10322

NEW YORK / JOHN F. KENNEDY INTL (JFK)  
ILS RWY 22R

40°38'N - 73°47'W

NE-2, 18 NOV 2010 to 16 DEC 2010

NE-2, 18 NOV 2010 to 16 DEC 2010