

APP CRS	Rwy Idg	8400
225°	TDZE	12
	Apt Elev	14

RNAV (RNP) Z RWY 22L

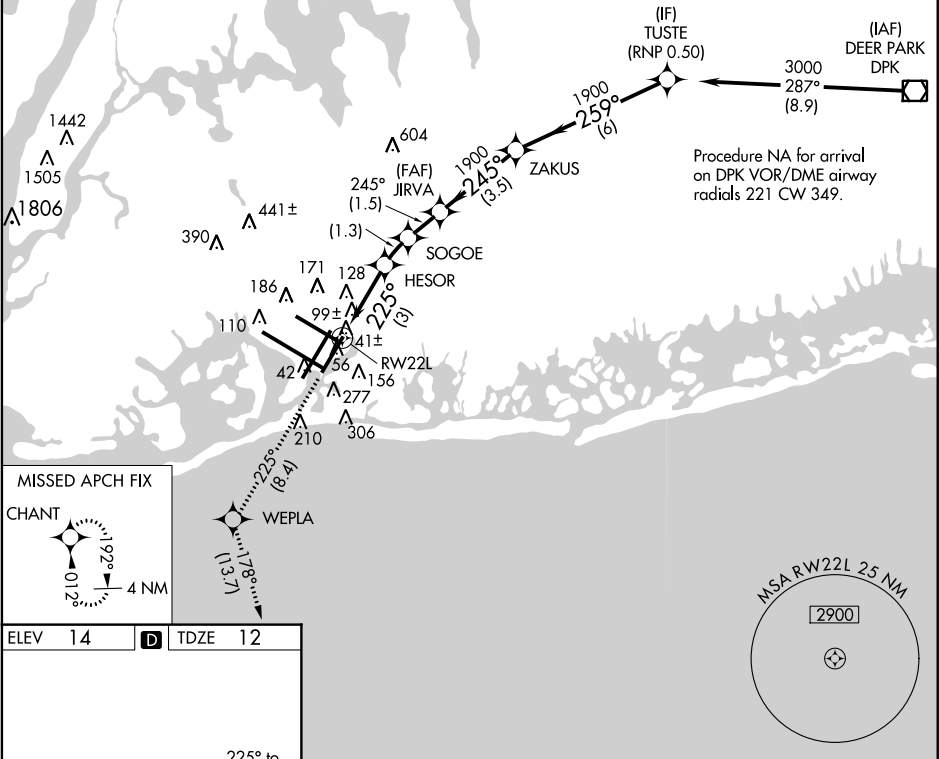
JOHN F KENNEDY INTL (JFK)

▼ For uncompensated Baro-VNAV systems, procedure NA below -12°C (11°F) or above 54°C (130°F). RF required. GPS required. Simultaneous operations authorized. Use of FD or AP providing RNAV track guidance required during simultaneous operations. For inop ALSF, increase RNP 0.20 and RNP 0.30 all Cats visibility to RVR 6000.

ALSF-2

MISSED APPROACH: Climb to 3000 on track 225° to WEPLA and on track 178° to CHANT and hold.

ATIS (ARR-NE) (ARR-SW)			NEW YORK APP CON		KENNEDY TOWER		GND CON	CLNC DEL	CPDLC
128.725	117.7	115.4	128.12	269.0	Rwys 4R/22L and 13L/31R	119.1 281.55	121.9	135.05	
					Rwys 4L/22R and 13R/31L	123.9 281.55	348.6	348.6	



ELEV 14	D	TDZE 12
REIL Rwy 4L RLLS Rwy 13R HIRL all Rwys TDZ/CL Rwys 4R, 13L, 31R and 22L		
VGSi and RNAV glidepath not coincident (VGSi Angle 3.00/TCH 66).		
CATEGORY	A	B C D
RNP 0.20 DA		316/40 304 (400-¾)
RNP 0.30 DA		405/40 393 (400-¾)
AUTHORIZATION REQUIRED		