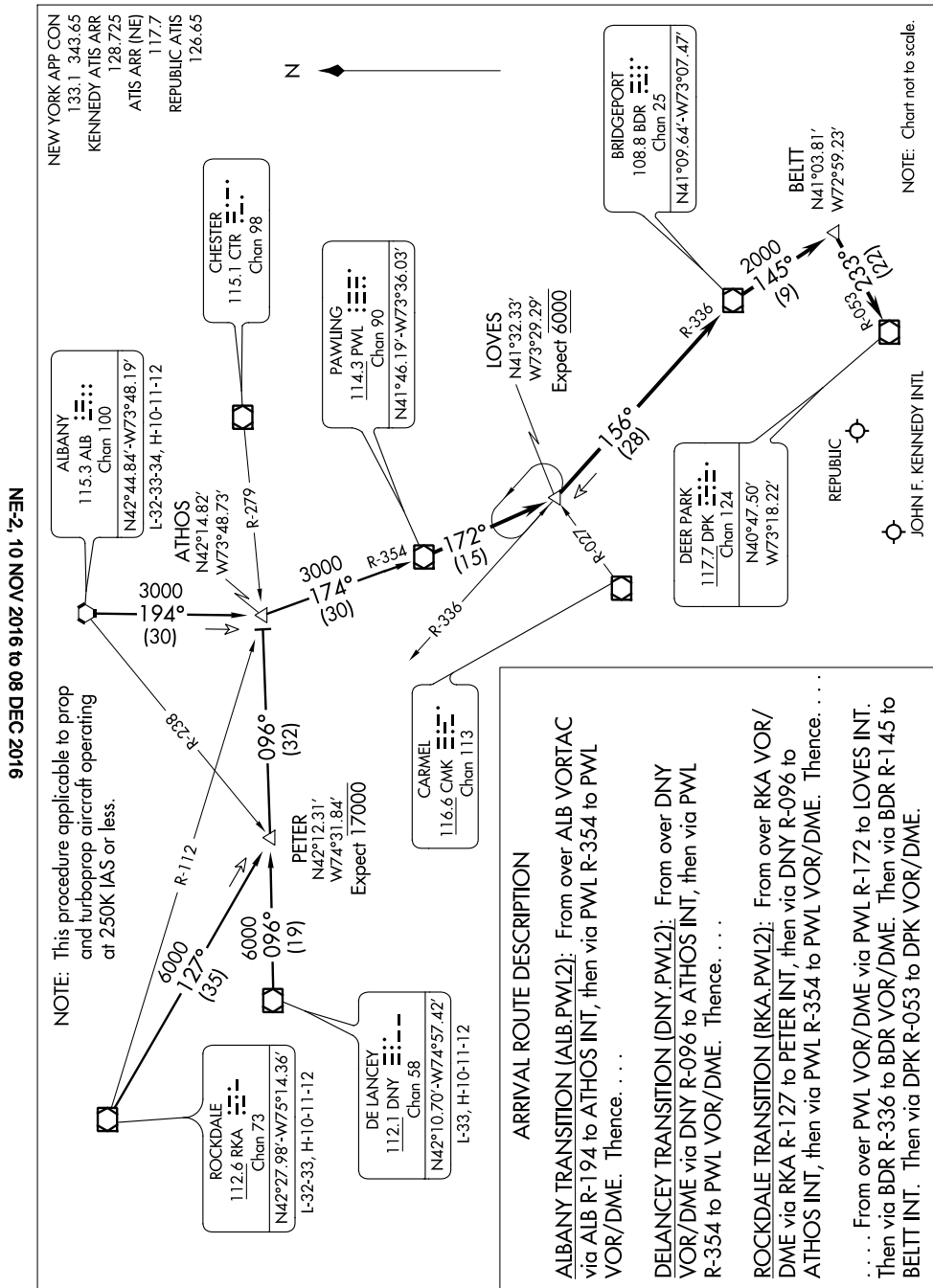


PAWLING TWO ARRIVAL



NE-2, 10 NOV 2016 to 08 DEC 2016

NOTE: This procedure applicable to prop and turboprop aircraft operating at 250K IAS or less.

ORK APP CON
133.1 343.65
NEDY ATIS ARR
128.725
ATIS ARR (NE)
117.7
REPUBLIC ATIS
126.65

$$Z$$

NOTE: Chart not to scale.

NE-2, 10 NOV 2016 to 08 DEC 2016

PAWLING TWO ARRIVAL