
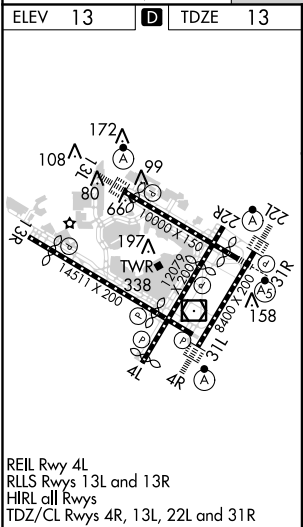
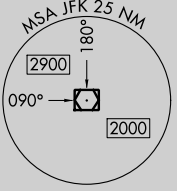
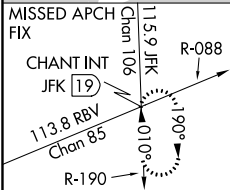
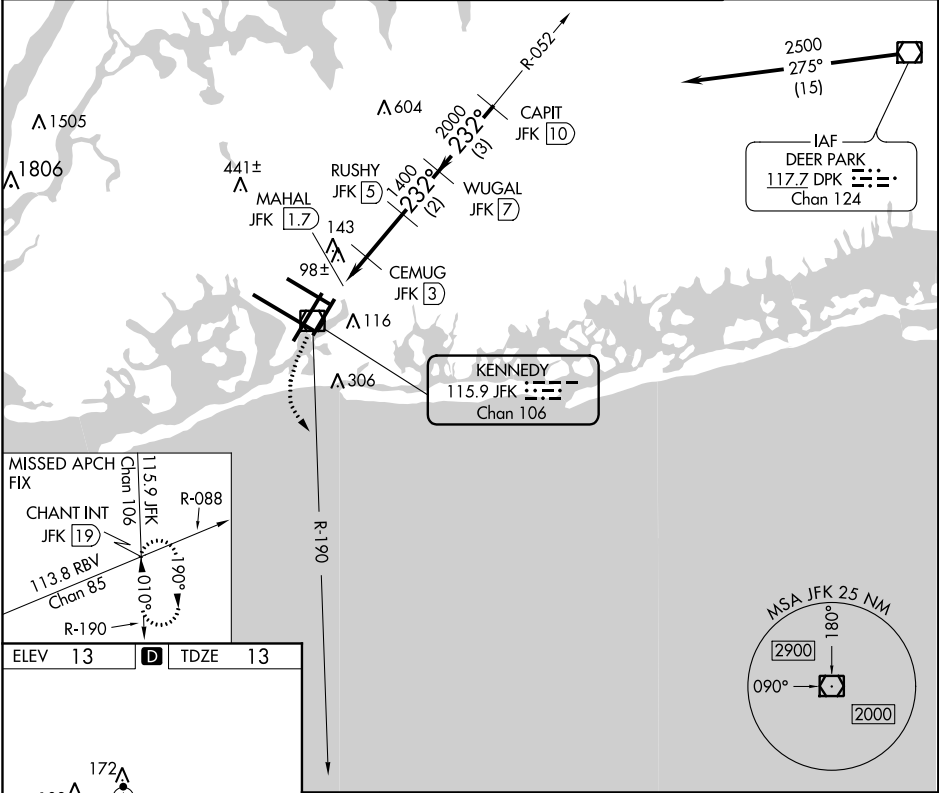



VOR/DME JFK	APP CRS	Rwy Idg
115.9	232°	8400
Chan 106		TDZE 13
		Apt Elev 13

VOR/DME RWY 22L
JOHN F KENNEDY INTL (JFK)

 Rwy 22L helicopter visibility reduction below RVR 4000 NA. For inop ALS, increase S-22L Cat A/B visibility to RVR 5500.	MISSED APPROACH: Climbing left turn to 3000 via JFK R-190 to CHANT INT/19 DME and hold.
--	--

D-ATIS (ARR/DEP) (ARR-NE) (ARR-SW)	NEW YORK APP CON	KENNEDY TOWER Rwys 4R/22L and 13L/31R Rwys 4L/22R and 13R/31L	GND CON	CLNC DEL	CPDLC
128.725 117.7 115.4	128.125 269.0	119.1 281.55 123.9 281.55	121.9 348.6	135.05 348.6	



3000	CHANT INT	CEMUG JFK [3]	RUSHY JFK [5]	WUGAL JFK [7]	CAPIT JFK [10]	2500
JFK R-190	JFK VOR/DME	MAHAL JFK [1.7]	JFK [2.4]			Procedure Turn NA
			600	1400	2000	
	0.6	0.7	0.6	2 NM	2 NM	3 NM
CATEGORY	A		B		C	
S-22L	440/40		427 (500-3/4)		440/50	
					427 (500-1)	
 CIRCLING	640-1 627 (700-1)		640-1 3/4 627 (700-1 3/4)		660-2 647 (700-2)	

NE-2: 07 NOV 2019 to 05 DEC 2019

NE-2: 07 NOV 2019 to 05 DEC 2019