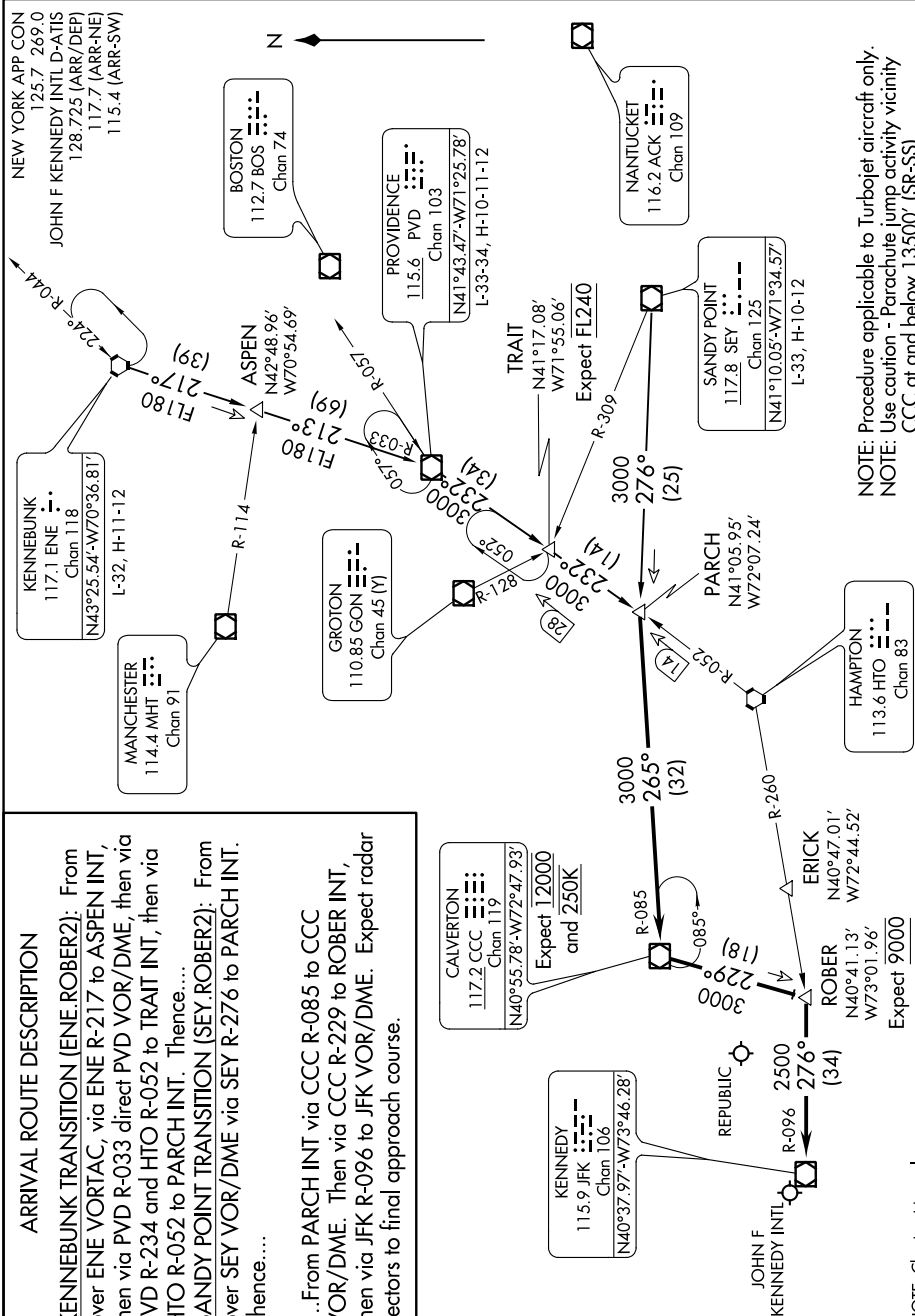


## ARRIVAL ROUTE DESCRIPTION

KENNEBUNK TRANSITION [ENE.ROBER2]: From  
over ENE VORTAC, via ENE R-217 to ASPEN INT,  
then via PVD R-033 direct PVD VOR/DME, then via  
PVD R-234 and HTO R-052 to TRAIT INT, then via  
HTO R-052 to PARCH INT. Thence....  
SANDY POINT TRANSITION [SEY.ROBER2]: From  
over SEY VOR/DME via SEY R-276 to PARCH INT.  
Thence....

.....From PARCH INT via CCC R-085 to CCC VOR/DME. Then via CCC R-229 to ROBER INT, then via JFK R-096 to JFK VOR/DME. Expect radar vectors to final approach course.



NOTE: Procedure applicable to Turbojet aircraft only.  
NOTE: Use caution - Parachute jump activity vicinity CCC at and below 13500' (SR-SS).

NOTE: Chart not to scale.