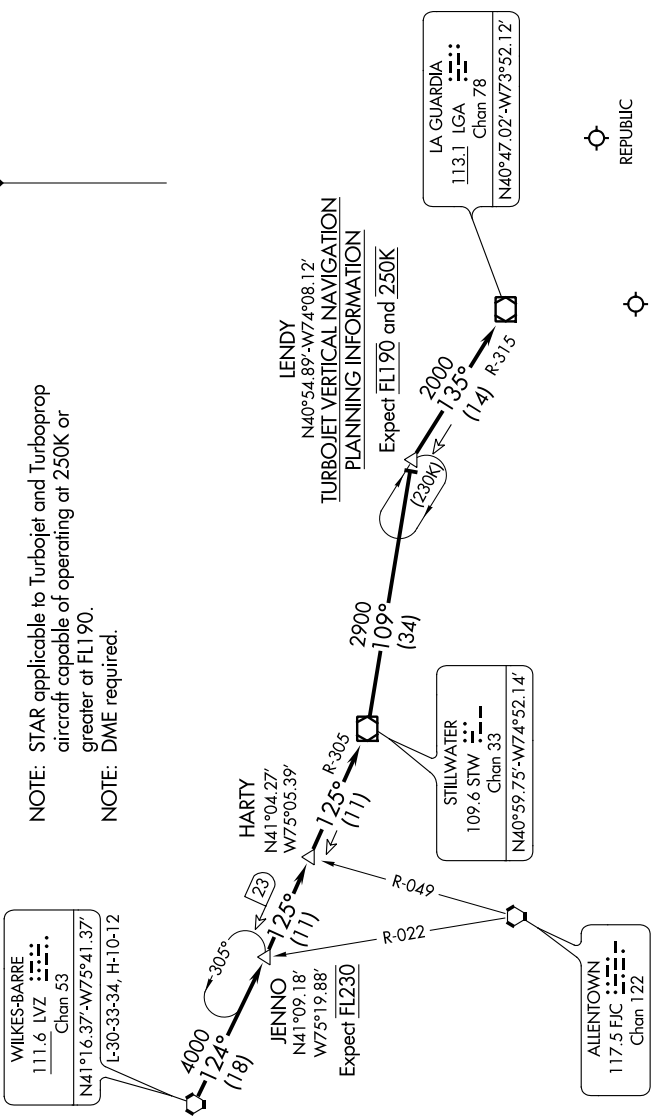


NE-2. 07 NOV 2019 to 05 DEC 2019

NEW YORK APP CON
128.125 269.0
JOHN F KENNEDY INTL D-ATIS
128.725 (ARR/DEP)
117.7 (ARR-NE)
115.4 (ARR-SW)
REPUBLIC ATIS
126.65



ARRIVAL ROUTE DESCRIPTION

From over LVZ VORTAC on LVZ R-124 to JENNO, then STW R-305 to HARTY INT, then STW R-305 to STW VOR/DME, then from STW VOR/DME on STW R-109 to LENDY, then on LGA R-315 to LGA VOR/DME. Expect radar vectors to final approach course after LGA VOR/DME.

NOTE: Chart not to scale.

NE-2. 07 NOV 2019 to 05 DEC 2019