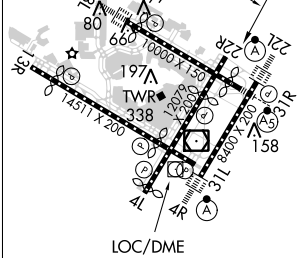
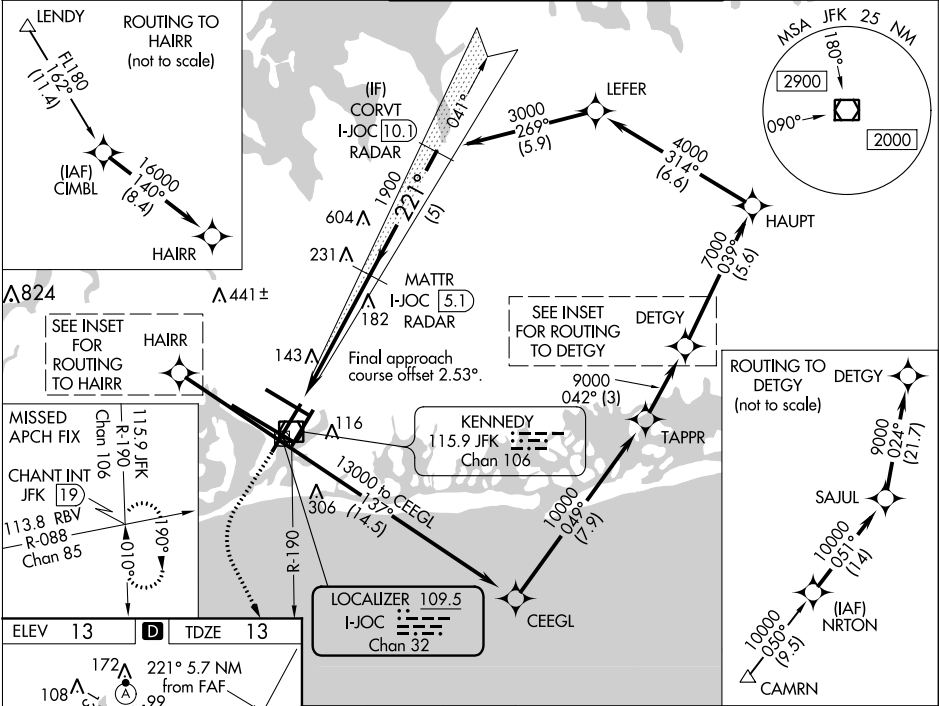


LOC/DME I-JOC	APP CRS	Rwy Idg	7795
109.5	221°	TDZE	13
Chan 32		Apt Elev	13

ILS or LOC RWY 22R
JOHN F KENNEDY INTL (JFK)

RNAV 1-GPS or RADAR required for procedure entry. From CAMRN, LENDY: RNAV 1-GPS required. DME or RADAR required.		MISSED APPROACH: Climb to 2000 then climbing left turn to 4000 on JFK VOR/DME R-190 to CHANT INT and hold.	
Simultaneous approach authorized.			

D-ATIS (ARR/DEP) (ARR-NE) (ARR-SW)	NEW YORK APP CON	KENNEDY TOWER Rwys 4R/22L and 13L/31R Rwys 4L/22R and 13R/31L	GND CON	CLNC DEL	CPDLC
128.725 117.7 115.4	128.125 269.0	119.1 281.55 123.9 281.55	121.9 348.6	135.05 348.6	



REIL Rwy 4L	60	90	120	150	180
RLS Rwys 13L and 13R	5:42	3:48	2:51	2:17	1:54
HIRL all Rwys					
TDZ/CL Rwys 4R, 13L, 22L and 31R					
FAF to MAP 5.7 NM					

VGSi and ILS glidepath not coincident (VGSi Angle 3.00°/TCH 77°).		MATTR I-JOC [5.1] RADAR		CORVT I-JOC [10.1] RADAR	
2000 4000 JFK R-190 CHANT INT		1900 221° 3000		GS 3.00° TCH 59	
5.7 NM		5 NM			
CATEGORY	A	B	C	D	
S-ILS 22R	263/40		250 (300-3%)		
S-LOC 22R	460/55	447 (500-1)	460-1 3/4	447 (500-1 3/4)	
CIRCLING	640-1	627 (700-1)	680-1 3/4 667 (700-1 3/4)	680-2 667 (700-2)	