

VOR/DME JFK	Rwy Idg	8400
115.9	TDZE	12
Chan 106	Apt Elev	13

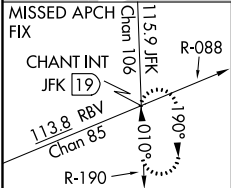
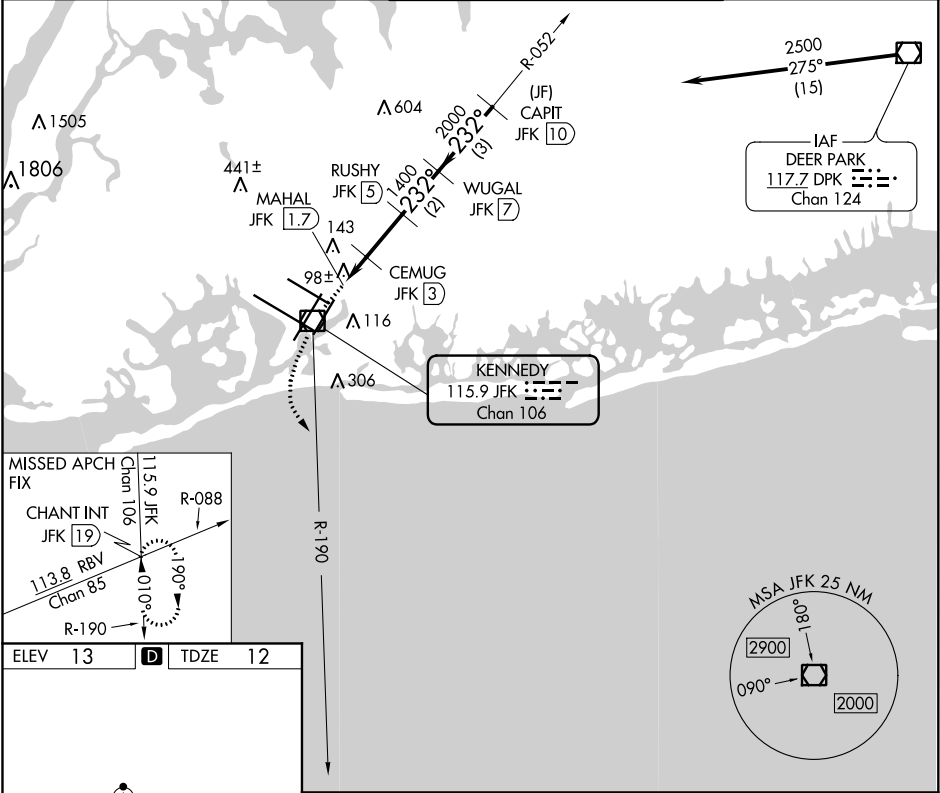
APP CRS
232°

VOR RWY 22L

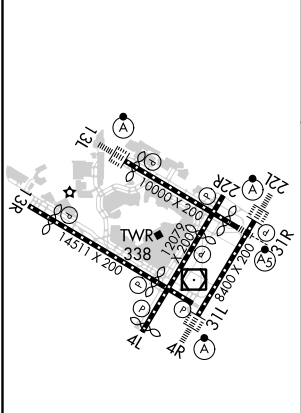
JOHN F KENNEDY INTL (JFK)

DME required.	ALSF-2	MISSED APPROACH: Climbing left turn to 3000 on JFK VOR/DME R-190 to CHANT INT/19 DME and hold.
▼ Rwy 22L helicopter visibility reduction below 1 SM NA. For inop ALS, increase S-22L Cat A/B visibility to RVR 5500.		

D-ATIS (ARR/DEP) (ARR-NE) (ARR-SW)	NEW YORK APP CON	KENNEDY TOWER	GND CON	CLNC DEL	CPDLC
128.725 117.7 115.4	128.125 269.0	Rwys 4R/22L and 13L/31R 119.1 281.55 Rwys 4L/22R and 13R/31L 123.9 281.55	121.9 135.05 348.6 348.6	135.05 348.6	



ELEV 13	D	TDZE 12
---------	---	---------



REIL Rwy 4L	440/40
RLS Rwys 13L and 13R	428 (500-3/4)
HIRL all Rwys	440/50
TDZ/CL Rwys 4L, 4R, 13L, 22L and 31R	428 (500-1)

3000	CHANT INT	CEMUG JFK [3]	RUSHY JFK [5]	WUGAL JFK [7]	CAPIT JFK [10]
JFK R-190	MAHAL JFK [1.7]	JFK [2.4]			
	600	1400	2000	2500	
	0.6	0.7	0.6	2 NM	2 NM
CATEGORY	A	B	C	D	
S-22L	440/40	428 (500-3/4)	440/50	428 (500-1)	
CIRCLING	640-1	627 (700-1)	680-1 3/4 667 (700-1 3/4)	680-2 667 (700-2)	

NE-2, 05 NOV 2020 to 03 DEC 2020

NE-2, 05 NOV 2020 to 03 DEC 2020