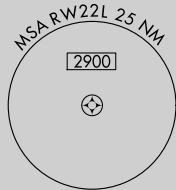


RNAV (RNP) Z RWY 22L  
JOHN F KENNEDY INTL (JFK)

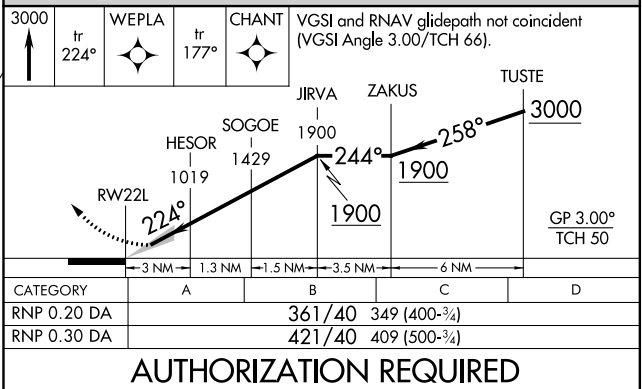
JOHN F KENNEDY INTL (JFK)

**MISSED APPROACH:** Climb to 3000 on track 224° to WEPLA and on track 177° to CHANT and hold.

GND CON	CLNC DEL	CPDLC
<b>121.9</b>	<b>135.05</b>	
<b>348.6</b>	<b>348.6</b>	



--	--



JOHN F KENNEDY INTL (JFK)  
RNAV (RNP) Z RWY 22L