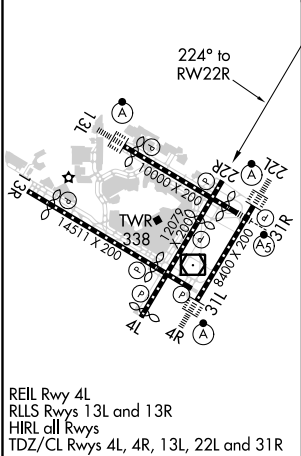
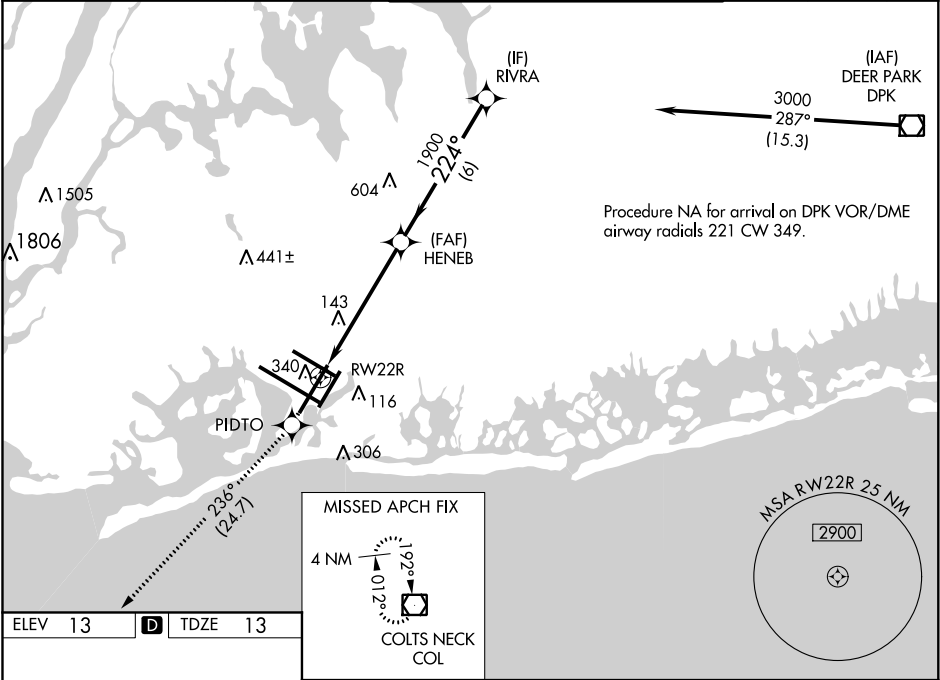


WAAS CH 40019 W22B	APP CRS 224°	Rwy Idg 7795 TDZE 13 Apt Elev 13
--	------------------------	---

RNAV (GPS) RWY 22R
JOHN F KENNEDY INTL (JFK)

RNP APCH. Simultaneous approach authorized. Use of FD or AP providing RNAV track guidance required during simultaneous operations. LNAV procedure NA during simultaneous operations. For uncompensated Baro-VNAV systems, LNAV/VNAV NA below -12°C or above 54°C.			MISSED APPROACH: Climb to 4000 direct PIDTO and on track 236° to COL VOR/DME and hold.		
D-ATIS (ARR/DEP) (ARR-NE) (ARR-SW) 128.725 117.7 115.4	NEW YORK APP CON 128.125 269.0	KENNEDY TOWER Rwys 4R/22L and 13L/31R 119.1 281.55 Rwys 4L/22R and 13R/31L 123.9 281.55	GND CON 121.9 348.6	CLNC DEL 135.05 348.6	CPDLC



4000 ↑	PIDTO ✦	tr 236° ◼	VGSI and RNAV glidepath not coincident (VGSI Angle 3.00/TCH 77).			
*LNAV only.			RIVRA			
RW22R 1.6 NM			HENEB 1900		3000	
*1.6 NM to RW22R			224°		GP 3.00° TCH 59	
4.1 NM			1900			
6 NM						
CATEGORY		A	B	C	D	
LPV	DA	269/40		256 (300-¾)		
LNAV/ VNAV	DA	501-1½		488 (500-1½)		
LNAV	MDA	600/55 587 (600-1)		600-1¾ 587 (600-1¾)		
CIRCLING		640-1 627 (700-1)		680-1¾ 667 (700-1¾)		680-2 667 (700-2)

NE-2, 05 NOV 2020 to 03 DEC 2020

NE-2, 05 NOV 2020 to 03 DEC 2020