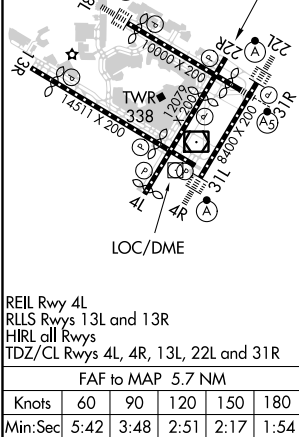
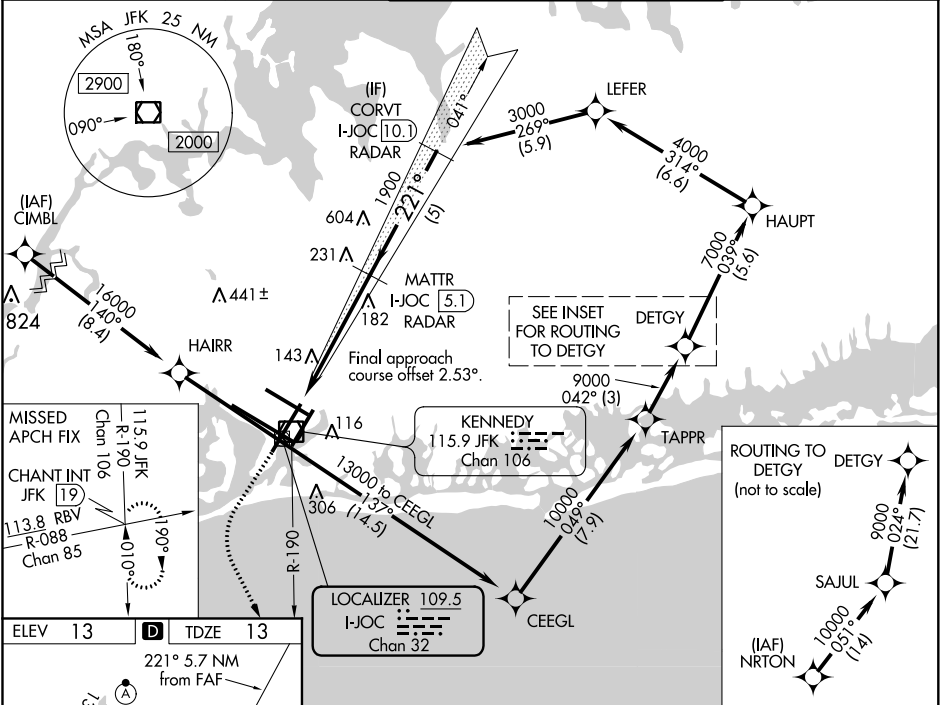


LOC/DME I-JOC	APP CRS	Rwy Idg	7795
109.5	221°	TDZE	13
Chan 32		Apt Elev	13

ILS or LOC RWY 22R  
JOHN F KENNEDY INTL (JFK)

RNAV 1-GPS or RADAR required for procedure entry. From CIMBL, NRTON: RNAV 1-GPS required. DME or RADAR required.		MISSED APPROACH: Climb to 2000 then climbing left turn to 4000 on JFK VOR/DME R-190 to CHANT INT and hold.
Simultaneous approach authorized.		

D-ATIS (ARR/DEP) (ARR-NE) (ARR-SW)	NEW YORK APP CON	KENNEDY TOWER Rwys 4R/22L and 13L/31R	GND CON	CLNC DEL	CPDLC
128.725 117.7 115.4	128.125 269.0	119.1 281.55 Rwys 4L/22R and 13R/31L 123.9 281.55	121.9 348.6	135.05 348.6	



2000 4000 JFK R-190		CHANT INT	MATTR I-JOC [5.1] RADAR		CORVT I-JOC [10.1] RADAR
VGS1 and ILS glidepath not coincident (VGS1 Angle 3.00/TCH 77).			1900 221° 3000		GS 3.00° TCH 59
5.7 NM		5 NM			
CATEGORY	A	B	C	D	
S-ILS 22R	263/40		250 (300-¾)		
S-LOC 22R	460/55	447 (500-1)	460-1⅓	447 (500-1⅓)	
CIRCLING	640-1	627 (700-1)	680-1⅓ 667 (700-1¼)	680-2 667 (700-2)	

NE-2, 05 NOV 2020 to 03 DEC 2020

NE-2, 05 NOV 2020 to 03 DEC 2020