

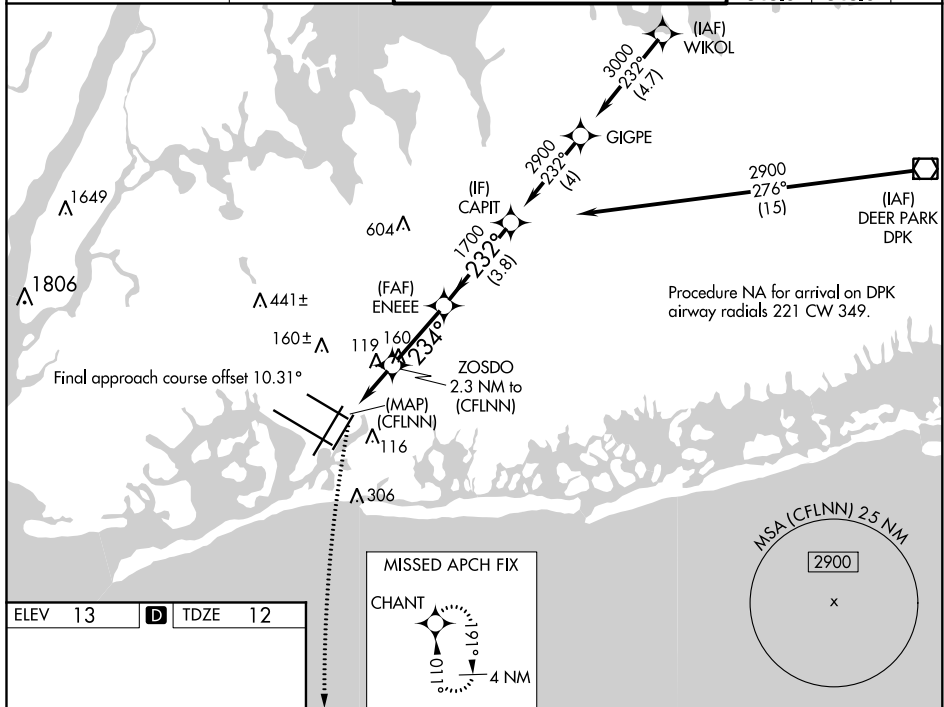
RNAV (GPS) X RWY 22L  
JOHN F KENNEDY INTL (JFK)

**T** For uncompensated Baro-VNAV systems, LNAV/VNAV NA below -14°C or above 54°C.  
For inop ALS, increase LNAV/VNAV all Cats visibility to RVR 6000.



**MISSED APPROACH:** Climbing left turn to 3000 direct CHANT and hold.

D-ATIS (ARR/DEP) (ARR-NE) (ARR-SW)	NEW YORK APP CON	KENNEDY TOWER		GND CON	CLNC DEL	CPDLC
128.725 117.7 115.4	128.125 269.0	Rwys 4R/22L and 13L/31R Rwys 4L/22R and 13R/31L	119.1 281.55 123.9 281.55	121.9 348.6	135.05 348.6	



RLS Rwy 13L and 13R  
HRL all Rwy  
TDZ/CL Rwy 4L, 4R, 13L, 22L and 31R

<div style="display: flex; align-items: center;"> <div style="border: 1px solid black; padding: 5px; margin-right: 10px;"> 3000  </div> <div style="border: 1px solid black; padding: 5px; margin-right: 10px;"> CHAN T  </div> <div> VGS1 and RNAV glidepath not coincident  (VGS1 Angle 3.00/TCH 66). </div> </div>	
<div style="display: flex; align-items: center;"> <div style="margin-right: 20px;"> * LNAV only. </div> </div>	
CATEGORY	<div style="display: flex; justify-content: space-between;"> <span>A</span> <span>B</span> <span>C</span> <span>D</span> </div>
LNAV/VNAV DA	<div style="display: flex; justify-content: space-between;"> <span>413/40</span> <span>401 (400-¾)</span> </div>
LNAV MDA	<div style="display: flex; justify-content: space-between;"> <span>440/24 428 {500-½}</span> <span>440/40 428 {500-¾}</span> </div>
CIRCLING	<div style="display: flex; justify-content: space-between;"> <span>640-1 627 {700-1}</span> <span>680-1¾ 667 {700-¾}</span> <span>680-2 667 {700-2}</span> </div>