

## CAMRN FOUR ARRIVAL

NEW YORK, NEW YORK

NEW YORK APP CON

128.125 269.0

FRG ATIS

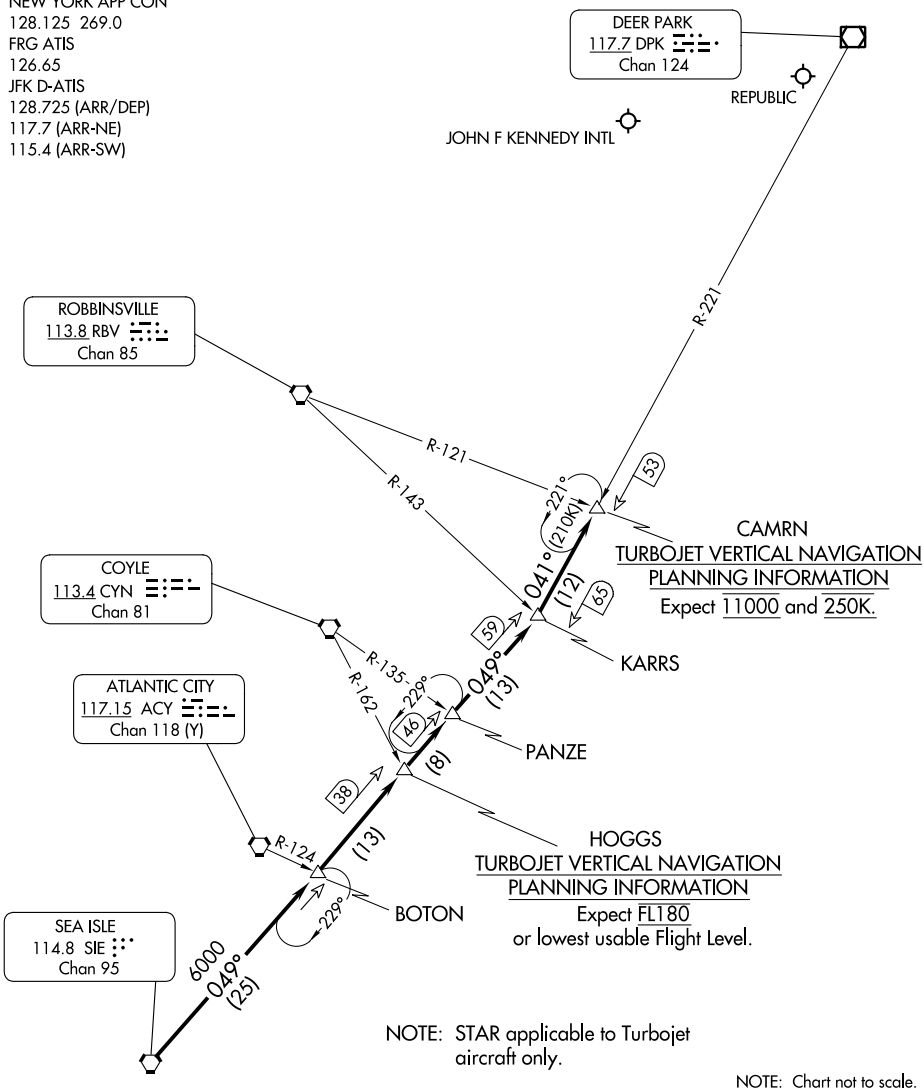
126.65

JFK D-ATIS

128.725 (ARR/DEP)

117.7 (ARR-NE)

115.4 (ARR-SW)



## ARRIVAL ROUTE DESCRIPTION

From over SIE VORTAC via SIE R-049 and DPK R-221 to CAMRN INT. Expect radar vectors to final approach fix in use.

## CAMRN FOUR ARRIVAL

NEW YORK, NEW YORK