


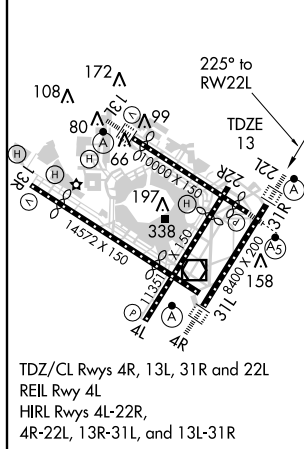
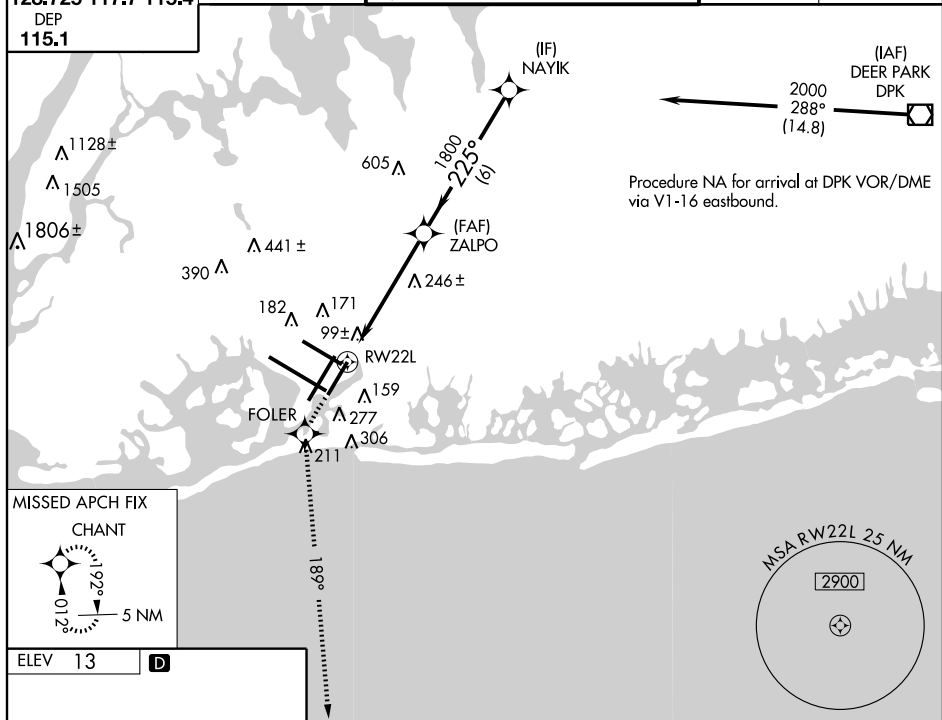
AL-610 (FAA)

WAAS CH 97318 W22A	APP CRS 225°	Rwy Idg 8400 TDZE 13 Apt Elev 13
--	------------------------	---

RNAV (GPS) Y RWY 22L
NEW YORK / JOHN F. KENNEDY INTL (JFK)

▼	For uncompensated Baro-VNAV systems, LNAV/VNAV NA below -13°C (8°F) or above 49°C (120°F). DME/DME RNP-0.3 NA.	ALSIF-2 	MISSED APPROACH: Climb to 3000 direct FOLER and via 189° track to CHANT and hold.
---	---	---	--

ATIS ARR (NE) (SW)	NEW YORK APP CON	KENNEDY TOWER Rwys 4R/22L and 13L/31R Rwys 4L/22R and 13R/31L	GND CON	CLNC DEL
128.725 117.7 115.4	127.4 269.0	119.1 281.55 123.9 281.55	121.9 348.6	135.05 348.6



3000 ↑	FOLER ✦	189° trk	CHANT ✦	VGSI and RNAV glidepath not coincident.	NAYIK
				2000 Procedure Turn NA GS 3.00% TCH 53	
CATEGORY	A		B		D
LPV DA	270/24		257 (300-½)		
LNNAV/ VNAV	420/50		407 (500-1)		
LNNAV MDA	560/24 547 (600-½)		560/50 547 (600-1)		560/60 547 (600-1½)
CIRCLING	640-1 627 (700-1)		640-1½ 627 (700-1¾)		640-2 627 (700-2)

NEW YORK, NEW YORK
Amdt 1B 09295

NEW YORK / JOHN F. KENNEDY INTL (JFK)
RNAV (GPS) Y RWY 22L

40°38'N - 73°47'W

NE-2, 22 OCT 2009 to 19 NOV 2009

NE-2: 22 OCT 2009 to 19 NOV 2009